



HIMLEY ROAD, SW17

£425,000

- Ground Floor Apartment
- 2 Double Bedrooms
- Large Lounge
- Well Appointed Kitchen
- Large Private Garden
- Extended Lease on Completion

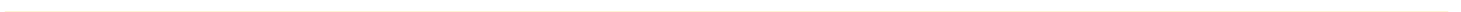




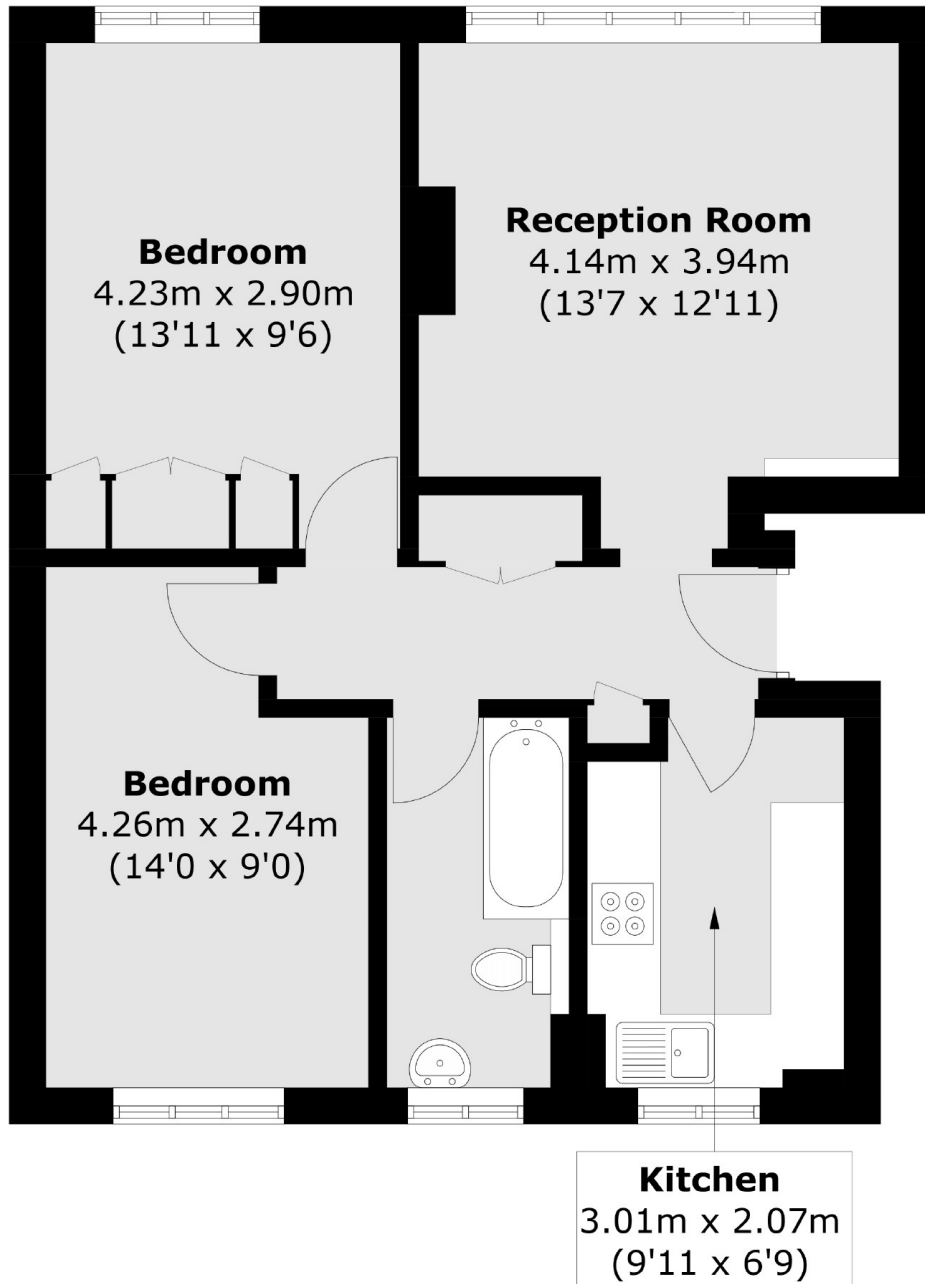
ABOUT THE HOME

A spacious 2 double bedroom purpose built apartment, positioned on the ground floor of this small private development located on Himley Road. Internally the property boasts well proportioned rooms throughout as well as ample built in storage space. The layout comprises; A bright sitting room flooded with natural light, separate well appointed kitchen, a modern bathroom and finally two equally sized double bedrooms. The property also benefits from a very large private garden with shed storage. The property is being sold with a newly extended lease as part of the sale.

Himley Road is conveniently located within Tooting Broadway, whether you are after transport connection via Tooting Broadway tube station, Tooting mainline rail into Blackfriars or regular buses running into the city. The vibrant nightlife of Tooting Broadway market is on your doorstep as well as a large selection of Gastro pubs, bars and restaurants.







Total area (approx.): 56.0 sq. m (602.8 sq. ft)

JACKSONS TOOTING

3 Upper Tooting Road, London,
SW17 7TS
Sales: 020 8487 3175
Lettings: 020 8487 3176

Energy Rating: We aim to make our particulars both accurate and reliable. However they are not guaranteed; nor do they form part of an offer or contract. If you require clarification on any points then please contact us, especially if you're traveling some distance to view. Please note that appliances and heating systems have not been tested and therefore no warranties can be given as to their good working order.