



CAMBRAY ROAD, SW12

£675,000

- Two Bedrooms
- South Facing Garden
- Ground Floor
- Kitchen Diner
- Close To Common
- Energy Rating: C





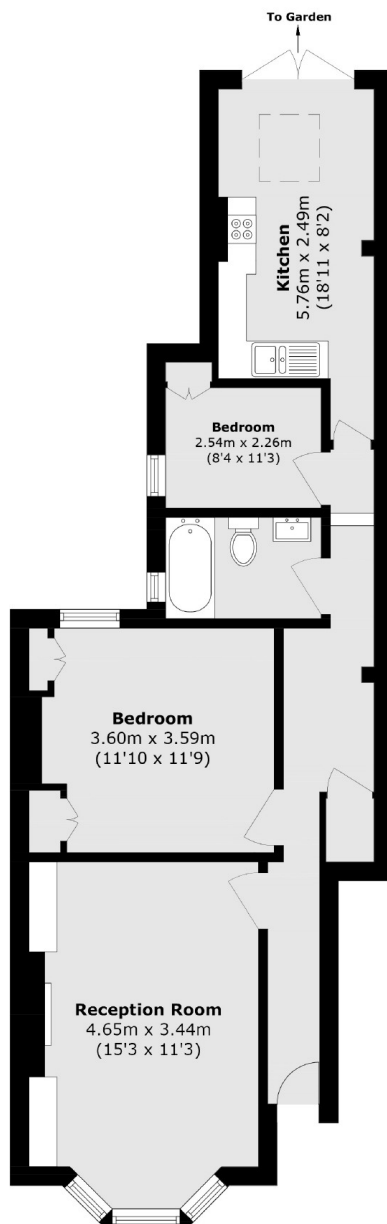
## ABOUT THE HOME

A beautiful example of a two bedroom ground floor garden flat, with a contemporary finish that still maintains lovely period features.

Located in the highly regarded area of the Hyde Farm, this property has easy access to all of the amenities on offer in Balham including the shops, restaurants and local bars. Balham mainline and underground stations are also close by, providing excellent transport links into the city. The lovely green open spaces of Tooting Bec Common are just a road away and Telferscot and Henry Cavendish Schools are also close by, making it a very family friendly area as well as appealing to young professionals looking to live in a popular location.







Total area (approx.): 68.4 sq. m (736.2 sq. ft)

#### **JACKSONS BALHAM**

8-11 Balham Station Road,  
London, SW12 9SG  
Sales: 020 8675 6555  
Lettings: 020 8675 6565

Energy Rating: We aim to make our particulars both accurate and reliable. However they are not guaranteed; nor do they form part of an offer or contract. If you require clarification on any points then please contact us, especially if you're traveling some distance to view. Please note that appliances and heating systems have not been tested and therefore no warranties can be given as to their good working order.