



BURNBURY ROAD, SW12

£750,000

- Two Bedrooms
- Ground Floor
- Private Garden
- Own Front Door
- Great Condition
- EPC Rating : C



2



1



2



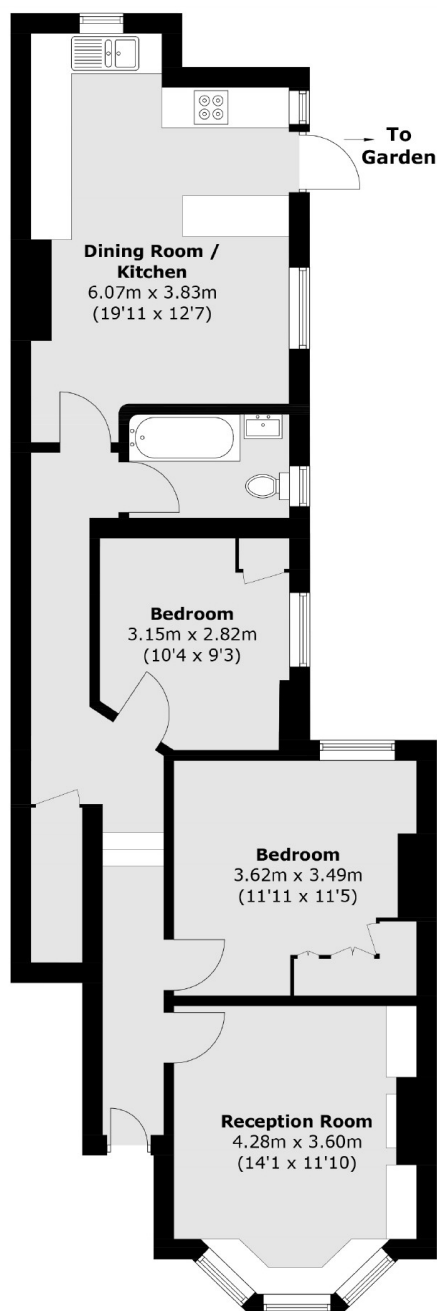
ABOUT THE HOME

A charming two bedroom ground floor Victorian maisonette with a private garden. This ground floor maisonette benefits a large front reception room, two double bedrooms, a modern bathroom and a large kitchen/dining room that leads out to the private garden.

Burnbury Road is part of a wonderful community, is within close proximity to Henry Cavendish and Telferscot Primary schools, and well situated for easy access to Balham mainline and underground stations (Northern Line). Tooting Bec Common, shops, bars, restaurants and other local amenities of Balham are also close by.







Total area (approx.): 76.25 sq. m (821.0 sq. ft)

JACKSONS BALHAM

8-11 Balham Station Road,
London, SW12 9SG
Sales: 020 8675 6555
Lettings: 020 8675 6565

Energy Rating: C We aim to make our particulars both accurate and reliable. However they are not guaranteed; nor do they form part of an offer or contract. If you require clarification on any points then please contact us, especially if you're traveling some distance to view. Please note that appliances and heating systems have not been tested and therefore no warranties can be given as to their good working order.