



CLOUDESDALE ROAD, SW17

£750,000

- Two Bedrooms
- Two Bathroom
- Split Level
- In Excess of 1000 Square Feet
- Fantastic Location
- EPC Rating : D





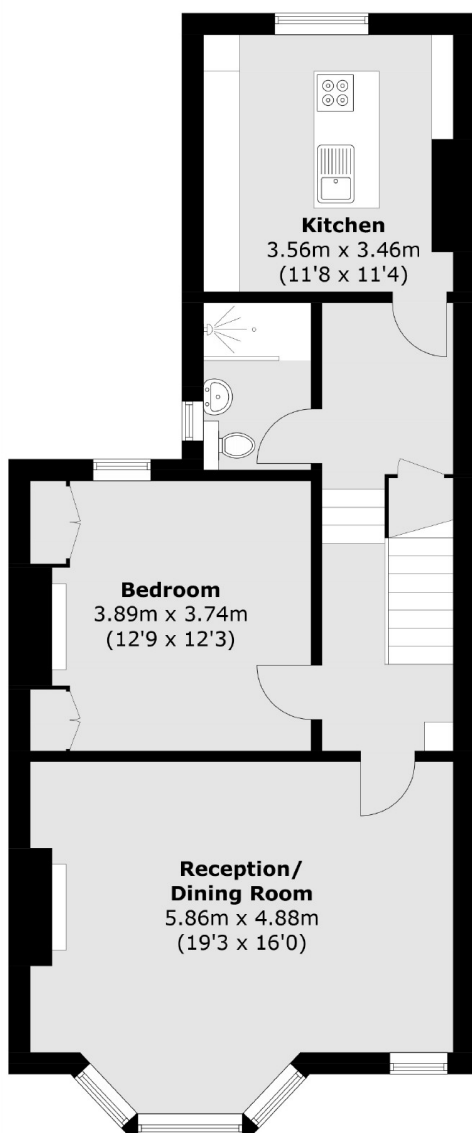
ABOUT THE HOME

A charming split level Victorian first and second floor flat that has been meticulously renovated by the current owners. The property offers two double bedrooms, two bathrooms, a high quality kitchen with breakfast bar seating and a spacious front reception room.

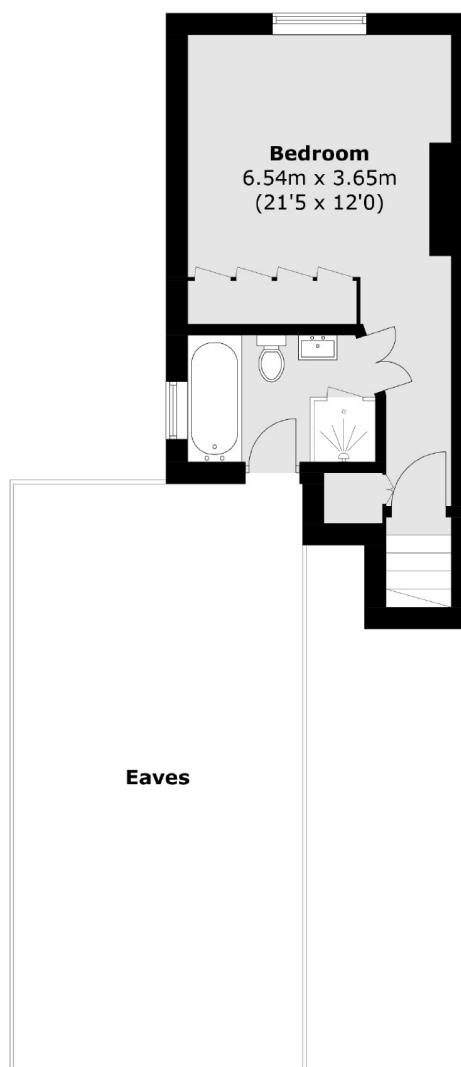
Located on Cloudesdale Road, in the heart of the Heaver Estate, this beautiful home is within easy reach of Balham where there are a large variety of restaurant, bars, cafés, shops and supermarkets. Balham also offers excellent transport links by way of the underground, offering northern line services, and the mainline with easy links to the city.







Ground Floor



First Floor

Total area (approx.): 93.9 sq. m (1010.7 sq. ft)

JACKSONS BALHAM

8-11 Balham Station Road,
London, SW12 9SG
Sales: 020 8675 6555
Lettings: 020 8675 6565

Energy Rating: We aim to make our particulars both accurate and reliable. However they are not guaranteed; nor do they form part of an offer or contract. If you require clarification on any points then please contact us, especially if you're traveling some distance to view. Please note that appliances and heating systems have not been tested and therefore no warranties can be given as to their good working order.