



SARSFELD ROAD, SW12

£1,300,000

- Semi Detached
- Terrific Potential
- Four Double Bedrooms
- Cellar
- South Facing Garden
- Energy Rating: E





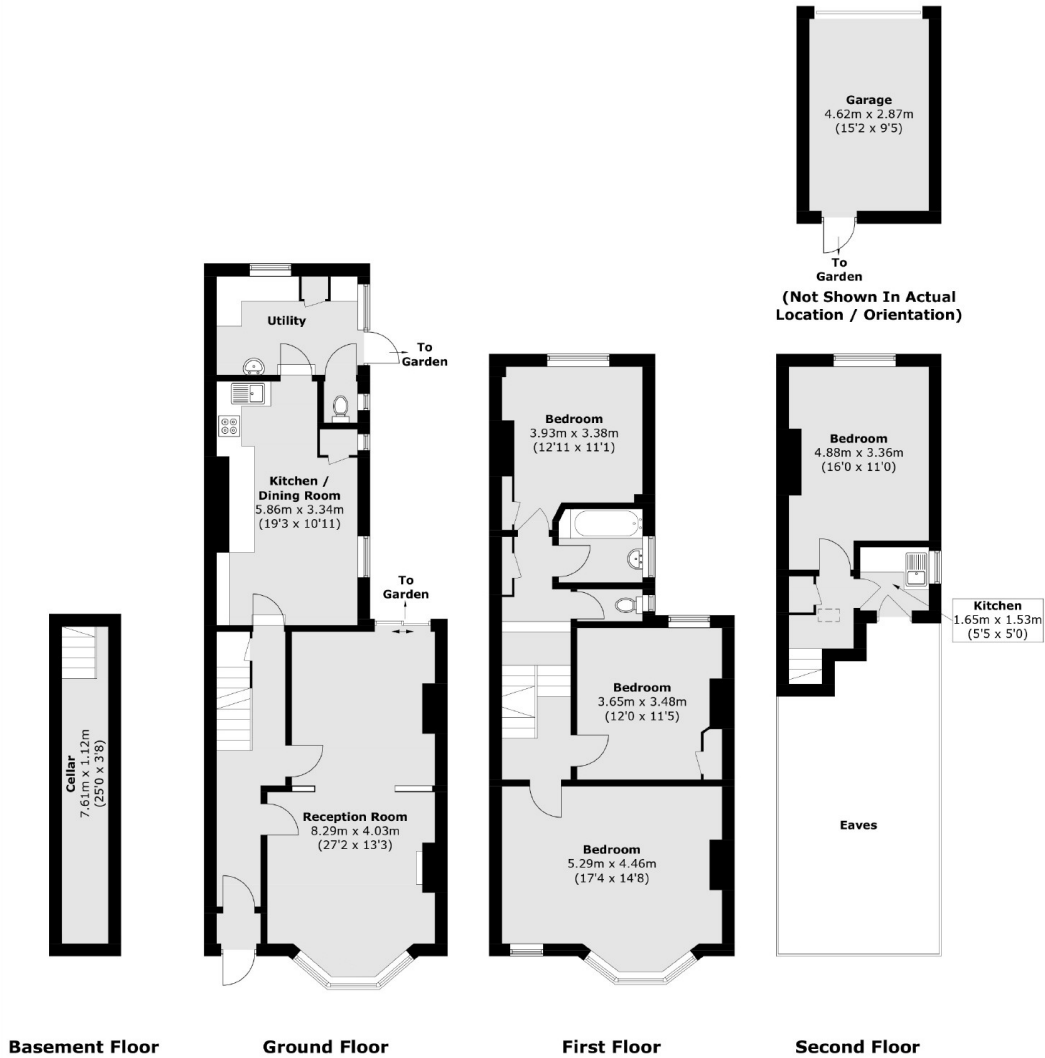
ABOUT THE HOME

A grand four bedroom semi detached home, situated in an idyllic location between Wandsworth and Tooting common, with plenty of scope to modernise and extend.

Sarsfeld Road is a popular residential road sitting in the enviable location between Balham and Wandsworth Common, where the amenities of both areas are within easy reach. The green open spaces of Wandsworth common are moments away and Balham mainline and underground stations are also close by offering excellent transport links to the city.







Total area (approx.): 163.1 sq. m (1,755.5 sq. ft)
 (Excluding Eaves)
 Garage: 13.4 sq. m (144.2 sq. ft)

JACKSONS BALHAM

8-11 Balham Station Road,
 London, SW12 9SG
 Sales: 020 8675 6555
 Lettings: 020 8675 6565

Energy Rating: We aim to make our particulars both accurate and reliable. However they are not guaranteed; nor do they form part of an offer or contract. If you require clarification on any points then please contact us, especially if you're traveling some distance to view. Please note that appliances and heating systems have not been tested and therefore no warranties can be given as to their good working order.