



EMMANUEL ROAD, SW12

£2,600 PCM

- Ground floor maisonette
- Reception room
- Two bedrooms
- Private garden
- Close to Balham station
- Energy rating: D



2



1



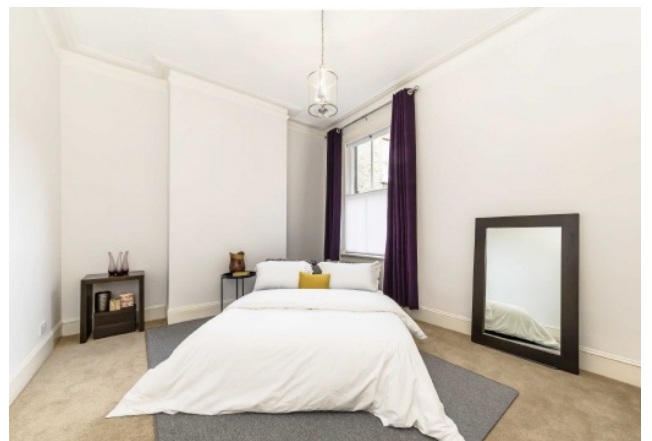
1



ABOUT THE HOME

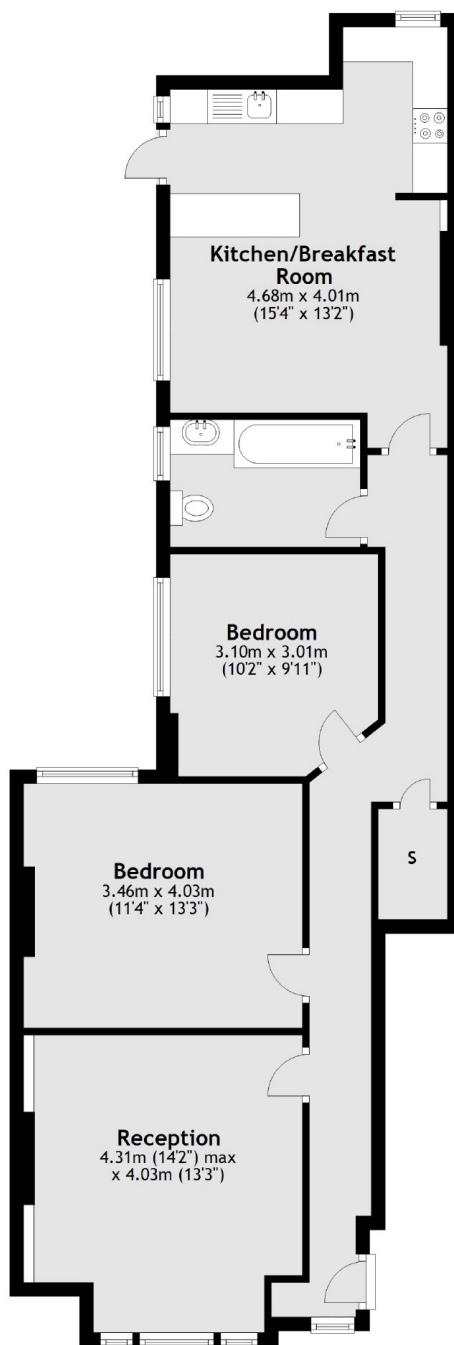
A ground floor two bedroom maisonette offered in excellent decorative order throughout. This property would be ideal for a professional couple.

Located opposite the green open spaces of Tooting Bec Common this property is in an ideal location for the local shops and amenities the area has to offer.





Ground Floor



Total area: approx. 82.0 sq. metres (882.6 sq. feet)

JACKSONS BALHAM

8-11 Balham Station Road,
London, SW12 9SG
Sales: 020 8675 6555
Lettings: 020 8675 6565

Energy Rating: D We aim to make our particulars both accurate and reliable. However they are not guaranteed; nor do they form part of an offer or contract. If you require clarification on any points then please contact us, especially if you're traveling some distance to view. Please note that appliances and heating systems have not been tested and therefore no warranties can be given as to their good working order.