



RADBOURNE ROAD, SW12

£675,000

- Two Bedrooms
- Ground Floor
- Victorian Maisonette
- South West Private Garden
- Great Condition
- Hyde Farm Estate





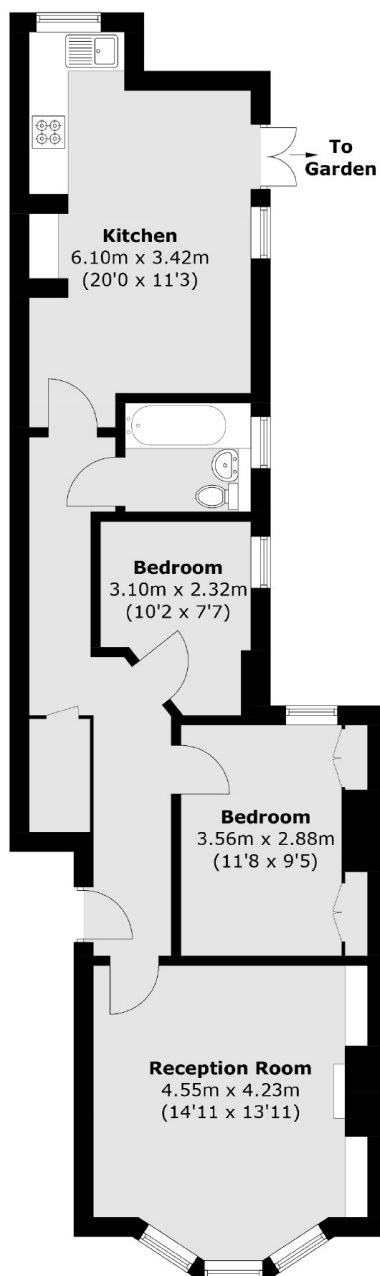
ABOUT THE HOME

A beautifully finished two bedroom ground floor Victorian maisonette in the Hyde Farm Estate of Balham, presented in great condition throughout. The property has a wealth of period charm, its own front door and a private garden.

Radbourne Road sits in the ever popular Hyde Farm Estate in Balham. There are many local amenities including shops, bars, restaurants and supermarkets and Balham Station is also within easy reach. The green spaces of Tooting Bec Common is a short walk away.







Total area (approx.): 70.1 sq. m (754.5 sq. ft)

JACKSONS BALHAM

8-11 Balham Station Road,
London, SW12 9SG
Sales: 020 8675 6555
Lettings: 020 8675 6565

Energy Rating: We aim to make our particulars both accurate and reliable. However they are not guaranteed; nor do they form part of an offer or contract. If you require clarification on any points then please contact us, especially if you're traveling some distance to view. Please note that appliances and heating systems have not been tested and therefore no warranties can be given as to their good working order.