



DORNTON ROAD, SW12

£725,000

- First floor
- Victorian maisonette
- Two Bedrooms

- Chain Free
- Private garden
- Energy rating: D





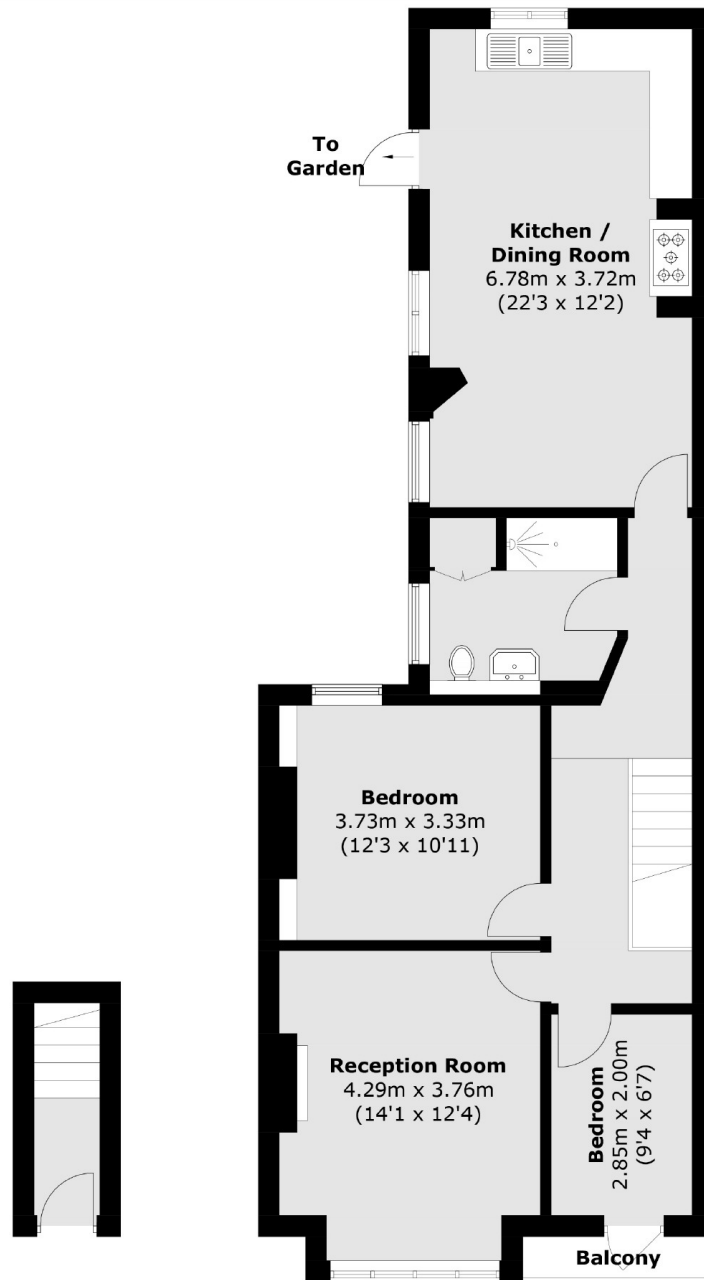
ABOUT THE HOME

A lovely two bedroom period maisonette with garden located 0.5 m from Balham Station. The property benefits from a good sized private garden, a front reception room and a large kitchen/dining room to the rear.

Located on the first floor of a period property, this stunning two double bedroom maisonette offers stylish, contemporary accommodation in a highly desirable location in Central Balham. Beautifully light throughout, the property boasts a large double aspect kitchen/dining room, an attractive living room with a period fireplace and two double bedrooms. The property furthermore benefits from its own garden. Dornton Road is located off Bedford Hill sitting just moments from Tooting Bec Common and within easy reach of Balham. There are a host of amenities on offer, including shops, bars, boutiques and restaurants as well as several large supermarkets. Balham mainline and underground stations are also close by.







Ground Floor

First Floor

Total area (approx.): 82.7 sq. m (890.2 sq. ft)
Balcony (approx.): 1.6 sq. m (17.2 sq. ft)

JACKSONS BALHAM

8-11 Balham Station Road,
London, SW12 9SG
Sales: 020 8675 6555
Lettings: 020 8675 6565

Energy Rating: D We aim to make our particulars both accurate and reliable. However they are not guaranteed; nor do they form part of an offer or contract. If you require clarification on any points then please contact us, especially if you're traveling some distance to view. Please note that appliances and heating systems have not been tested and therefore no warranties can be given as to their good working order.