



YUKON ROAD, SW12

£700,000

- Ground floor
- Victorian maisonette
- Two double bedrooms
- Private garden
- Period features
- Energy rating: C





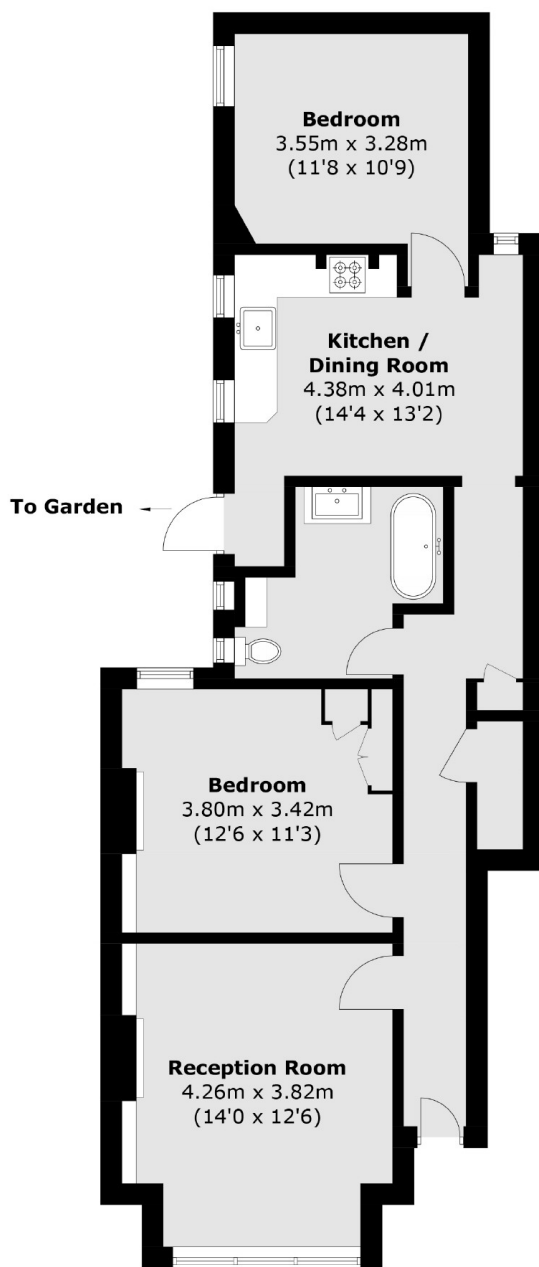
ABOUT THE HOME

A two double bedroom ground floor Victorian maisonette presented in great condition with a private garden. This charming property offers a large front reception, two double bedrooms, a stylish bathroom and a modern kitchen with dining space.

Yukon Road runs between Balham High Road and Cavendish Road and is well located for easy access to Clapham South as well as Abbeville Village. The green open spaces of Clapham Common are within easy reach as are the plethora of shops, bars and restaurants that the area has to offer.







Total area (approx.): 72.0 sq. m (775.0 sq. ft)

JACKSONS BALHAM

8-11 Balham Station Road,
London, SW12 9SG
Sales: 020 8675 6555
Lettings: 020 8675 6565

Energy Rating: C We aim to make our particulars both accurate and reliable. However they are not guaranteed; nor do they form part of an offer or contract. If you require clarification on any points then please contact us, especially if you're traveling some distance to view. Please note that appliances and heating systems have not been tested and therefore no warranties can be given as to their good working order.