



HESLOP ROAD, SW12

£375,000

- One Double Bedroom
- First Floor Flat
- Bright Reception Room
- Close to Wandsworth Common
- Boundaries Triangle
- Energy Rating C





ABOUT THE HOME

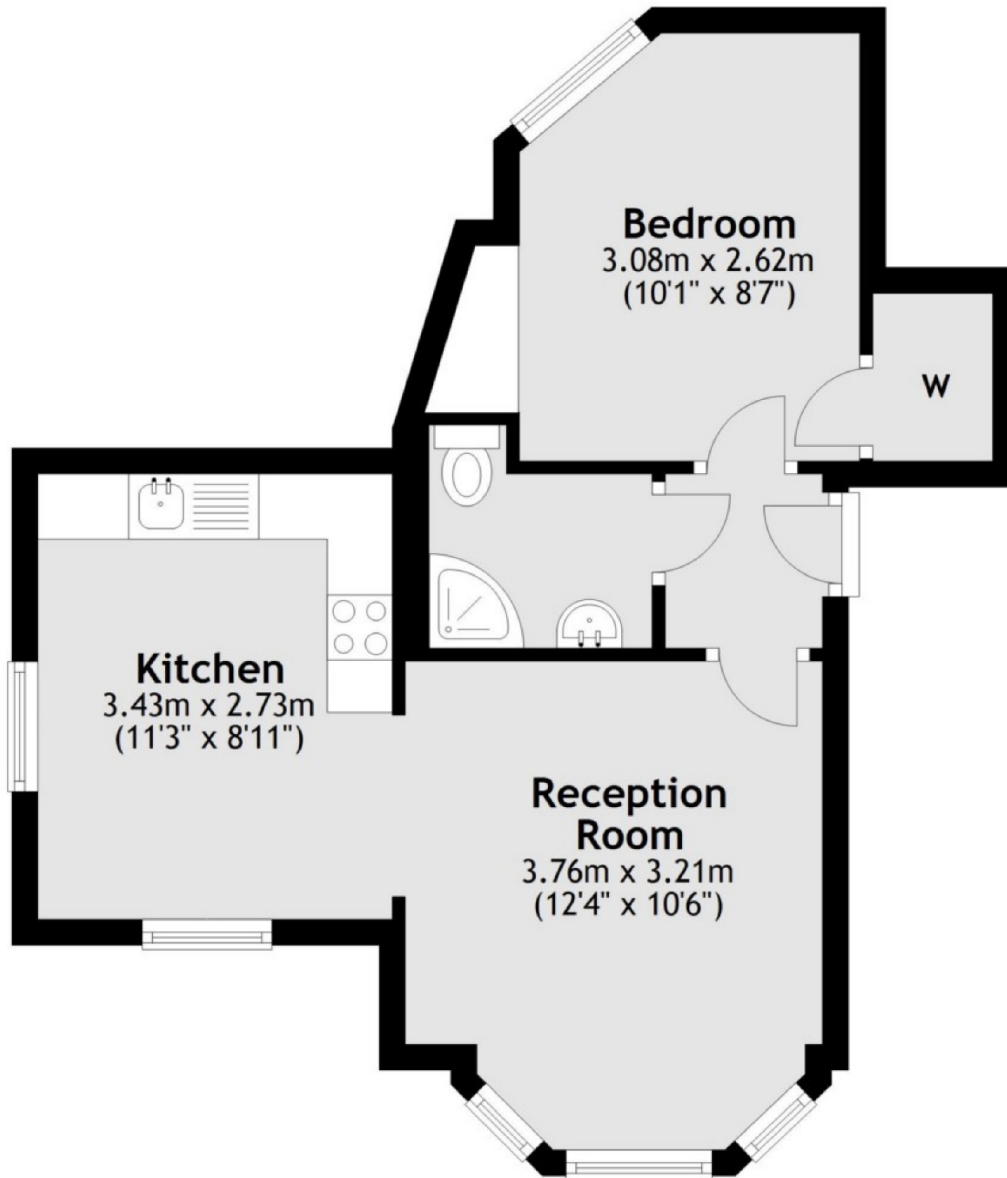
A bright and spacious one double bedroom, first floor flat that offers ample living space.

Situated on Heslop Road this property is ideally located between the array of local shops, bars, restaurants and supermarkets along Balham High Road and the open spaces of Wandsworth Common. Balham Station and Underground and Wandsworth Common Station are within easy reach.





First Floor



Total area: approx. 36.2 sq. metres (390.1 sq. feet)

JACKSONS BALHAM

8-11 Balham Station Road,
London, SW12 9SG
Sales: 020 8675 6555
Lettings: 020 8675 6565

Energy Rating: C We aim to make our particulars both accurate and reliable. However they are not guaranteed; nor do they form part of an offer or contract. If you require clarification on any points then please contact us, especially if you're traveling some distance to view. Please note that appliances and heating systems have not been tested and therefore no warranties can be given as to their good working order.