



NIGHTINGALE LANE, SW12

£700,000

- One Double Bedroom
- Beautifully Presented
- Private Balcony
- Between the Commons
- Garden
- Energy Rating C





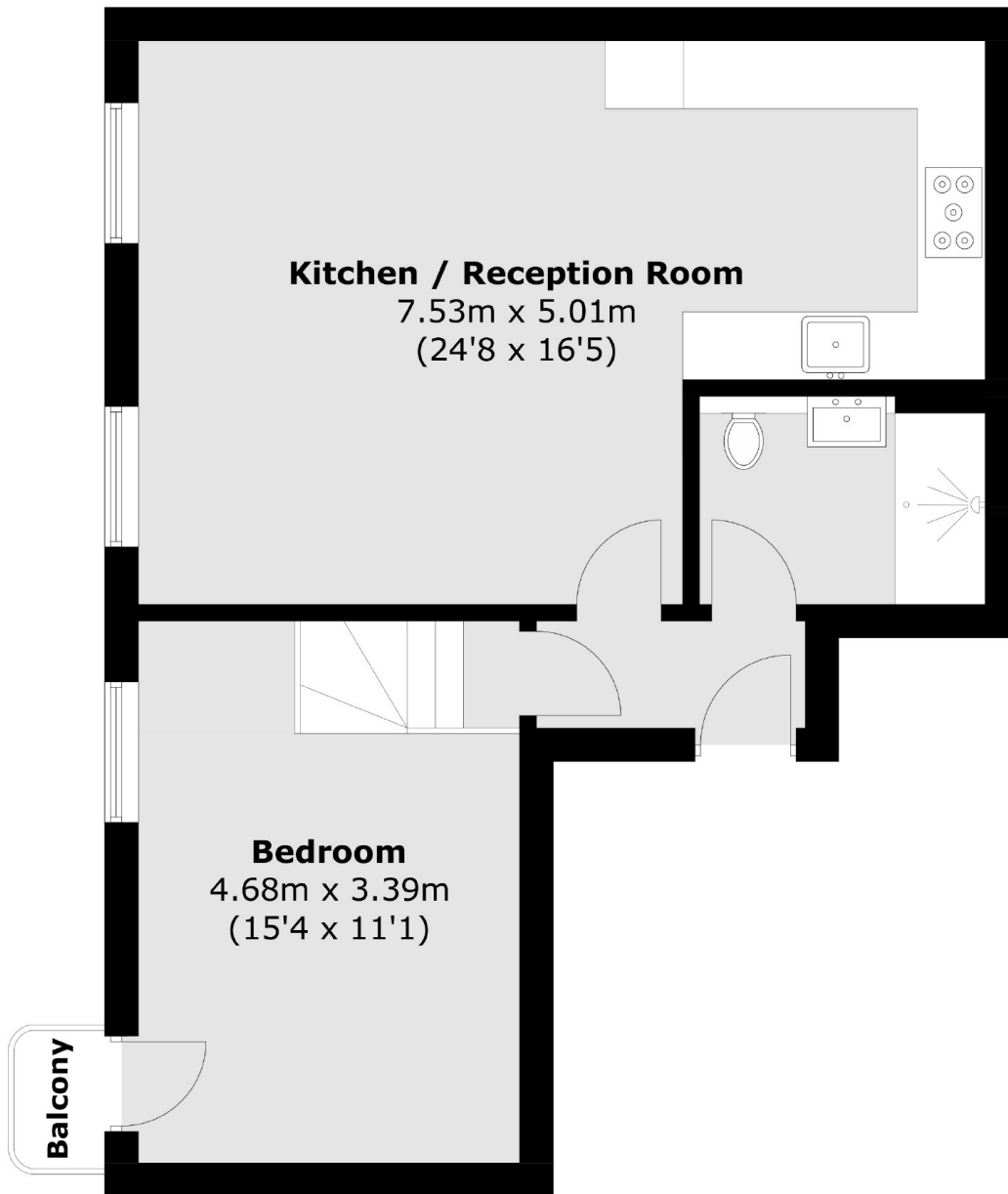
## ABOUT THE HOME

Set in a beautiful mansion block located between Clapham and Wandsworth Commons, is this impressive one double bedroom flat. This property offers a spacious open plan kitchen / reception room. There is a bright bedroom with access to a private balcony and luxury bathroom. This building also has access to a large communal garden at the rear.

Located on Nightingale Lane, this wonderful home is both a short walk away from Clapham South Underground Station, the green spaces of Wandsworth Common and the trendy Bellevue and Northcote Road shopping districts.







Total area (approx.): 57.6 sq. m (620.0 sq. ft)  
Balcony: 1.0 sq. m (10.8 sq. ft)

#### JACKSONS BALHAM

8-11 Balham Station Road,  
London, SW12 9SG  
Sales: 020 8675 6555  
Lettings: 020 8675 6565

Energy Rating: C We aim to make our particulars both accurate and reliable. However they are not guaranteed; nor do they form part of an offer or contract. If you require clarification on any points then please contact us, especially if you're traveling some distance to view. Please note that appliances and heating systems have not been tested and therefore no warranties can be given as to their good working order.