



BALHAM GROVE, SW12

£2,500 PCM

- Fourth floor flat
- Modern fitted kitchen
- Two double bedrooms
- Two private balconies
- Allocated parking
- Energy rating: C





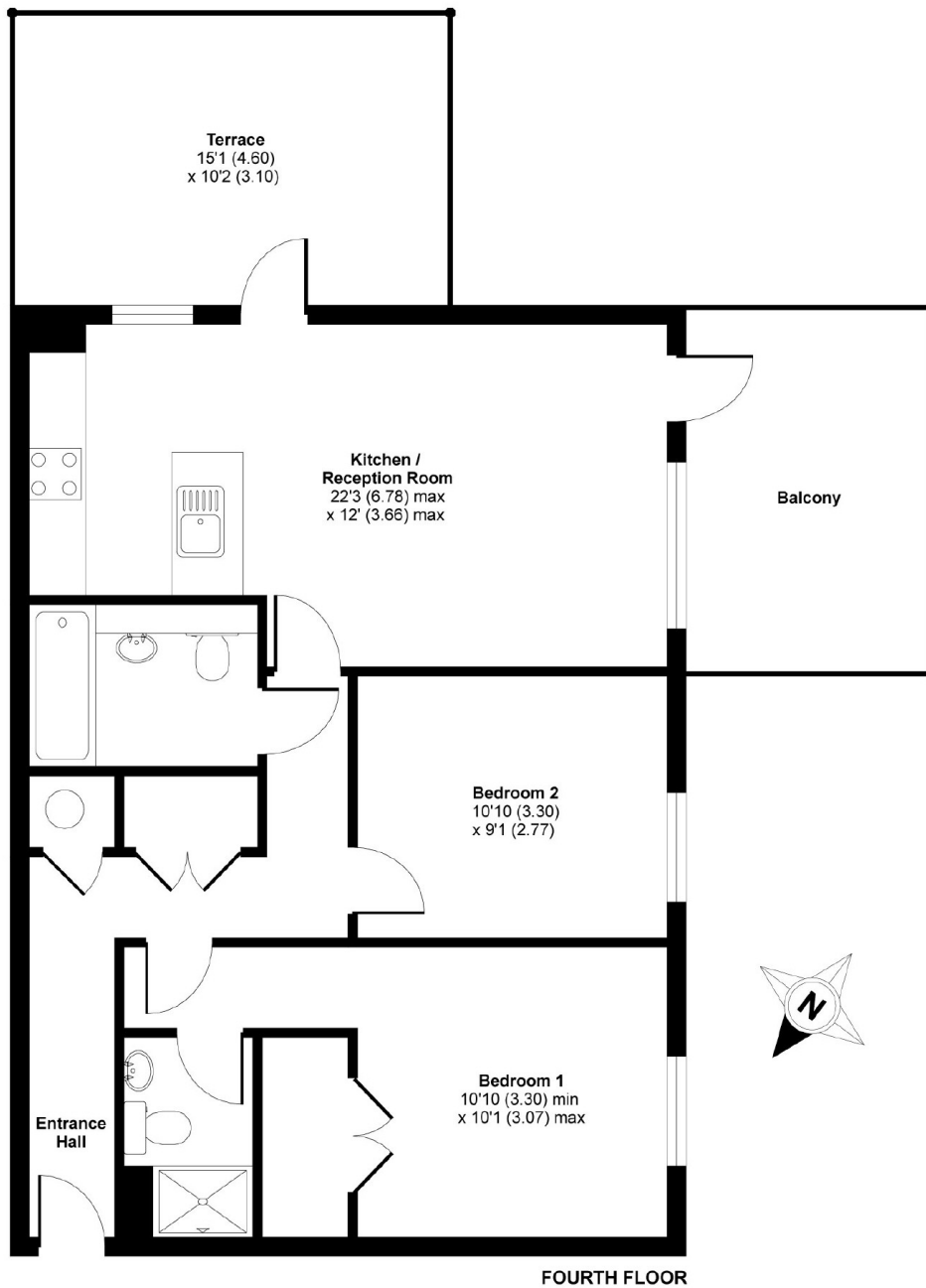
## ABOUT THE HOME

This spacious two bedroom modern apartment offers ample living space throughout for a professional couple or professional sharers.

Blueprint Apartments is located within close proximity to Balham High Road and the plethora of local shops, bars and restaurants central Balham has to offer.







APPROX. GROSS INTERNAL FLOOR AREA 714 SQFT / 66 SQM

**Blueprint Apts Balham Grove Balham SW12**

Copyright nichecom.co.uk 2011 Produced for Jacksons the Independent Estate Agents REF : LE090514

### JACKSONS BALHAM

8-11 Balham Station Road,  
London, SW12 9SG  
Sales: 020 8675 6555  
Lettings: 020 8675 6565

Energy Rating: C We aim to make our particulars both accurate and reliable. However they are not guaranteed; nor do they form part of an offer or contract. If you require clarification on any points then please contact us, especially if you're traveling some distance to view. Please note that appliances and heating systems have not been tested and therefore no warranties can be given as to their good working order.