



NIGHTINGALE LANE, SW12

£1,200,000

- Two Double Bedrooms
- Split Level Apartment
- Garden
- Fantastic Condition
- Between the Commons
- Energy Rating B





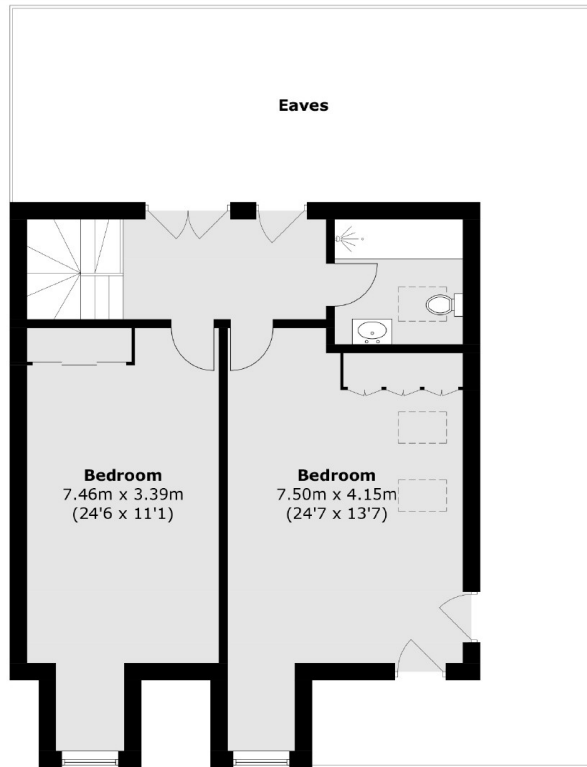
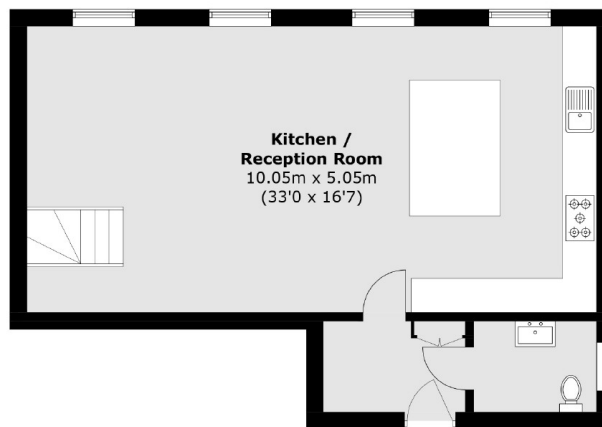
ABOUT THE HOME

A fully renovated and extended two double bedroom top floor apartment measuring almost 1400 square feet. The property has been meticulously renovated to an exacting standard by the current owners, which include smart home features and a show-piece central island in the kitchen.

Located on Nightingale Lane, this wonderful home is both a short walk away from Clapham South Underground Station, the green spaces of Wandsworth Common and the trendy Bellevue and Northcote Road shopping districts.





**Third Floor****Second Floor**

Total area (approx.): 124.0 sq. m (1334.7 sq. ft)
(Excluding Eaves)

JACKSONS BALHAM

8-11 Balham Station Road,
London, SW12 9SG
Sales: 020 8675 6555
Lettings: 020 8675 6565

Energy Rating: B We aim to make our particulars both accurate and reliable. However they are not guaranteed; nor do they form part of an offer or contract. If you require clarification on any points then please contact us, especially if you're traveling some distance to view. Please note that appliances and heating systems have not been tested and therefore no warranties can be given as to their good working order.