



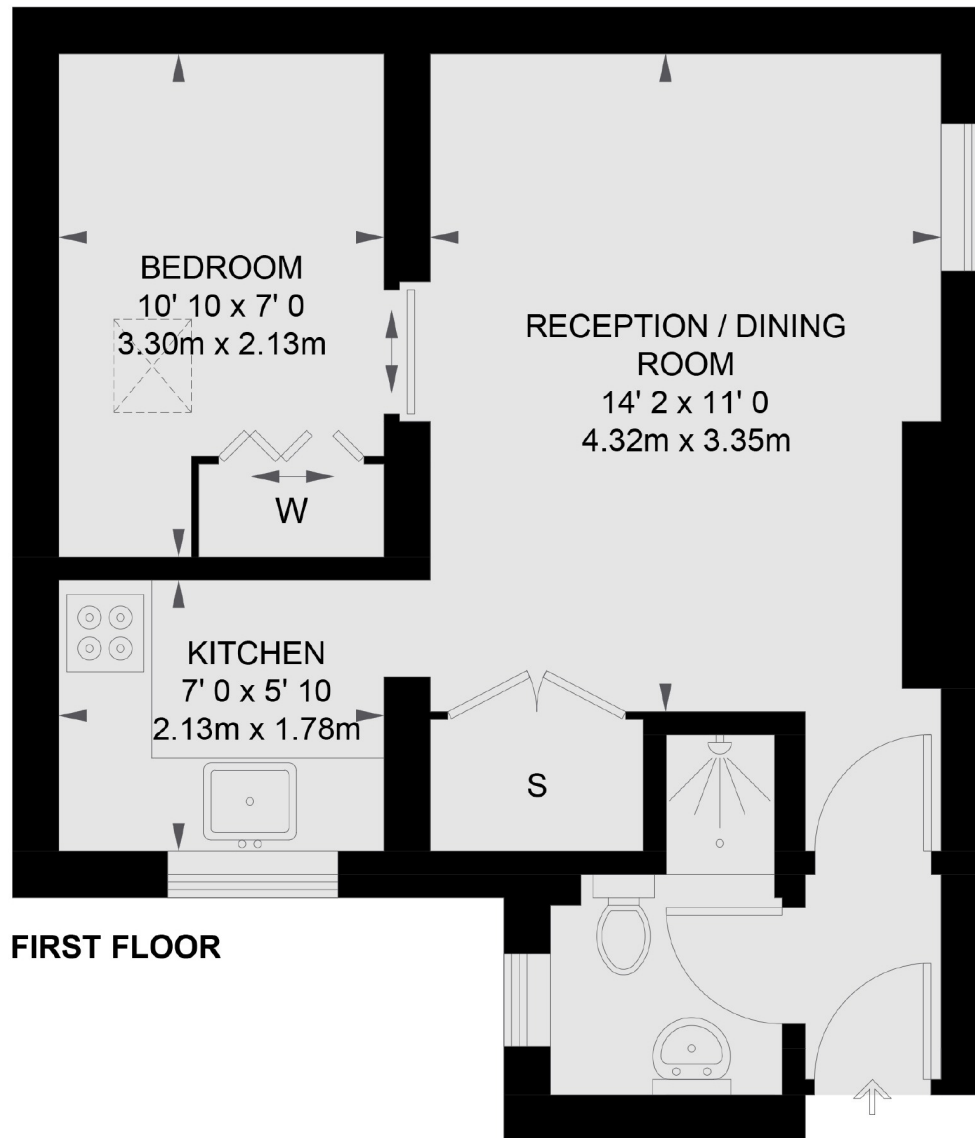
Boundaries Road, SW12

£1,400 PCM

A one bedroom, first floor victorian period conversion flat in the heart of Balham. This property would be suitable for a professional couple or a single occupant.

- First Floor Flat
- Reception Room
- Fitted Kitchen
- One Bedroom
- Close to Station
- Furnished

For further information on the costs associated with renting a property, please pop into our office or visit our website.

**FIRST FLOOR**

TOTAL APPROX. FLOOR AREA 368 SQ. FT. (34.2 SQ. M.)

Jacksons Balham
8-11 Balham Station Road
London
SW12 9SG
020 8675 6565
balham.lettings@jacksonsestateagents.com

Energy Rating: D We aim to make our particulars both accurate and reliable. However they are not guaranteed; nor do they form part of an offer or contract. If you require clarification on any points then please contact us, especially if you're traveling some distance to view. Please note that appliances and heating systems have not been tested and therefore no warranties can be given as to their good working order.