



RASTELL AVENUE, SW2

£675,000

- Beautifully Finished
- Shared Garden
- Share of Freehold
- Views of the Common
- Private Balcony
- Energy Rating D





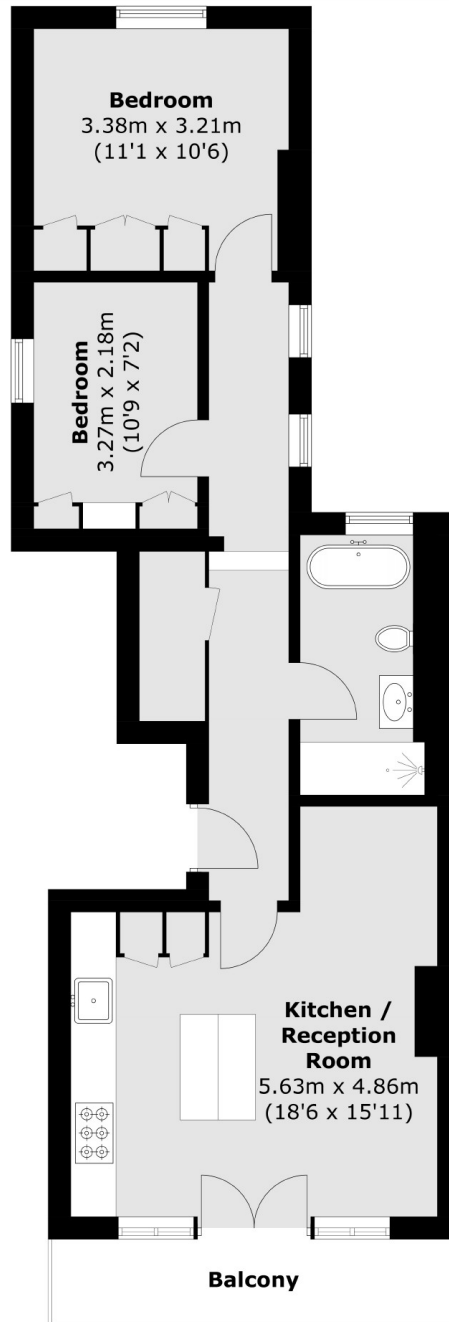
ABOUT THE HOME

A charming two bedroom first floor Victorian conversion flat, with a private balcony overlooking Tooting Bec Common. The property is in fantastic condition and has access to a communal garden.

Rastell Avenue is a beautiful tree-lined road opposite Tooting Bec Common and is arguably Telford Park's most premier road lying south of the Hyde Farm area. Here there are two outstanding schools - Henry Cavendish and Telferscot primary schools, both of which are incredibly popular with local families. The vast array of amenities offered in Balham are within easy reach, including the many shops, bars, restaurants and supermarkets, as are the excellent transport links by way of Balham's mainline and underground stations.







Total area (approx.): 60.0 sq. m (645.8 sq. ft)
Balcony: 5.9 sq. m (63.5 sq. ft)

JACKSONS BALHAM

8-11 Balham Station Road,
London, SW12 9SG
Sales: 020 8675 6555
Lettings: 020 8675 6565

Energy Rating: D We aim to make our particulars both accurate and reliable. However they are not guaranteed; nor do they form part of an offer or contract. If you require clarification on any points then please contact us, especially if you're traveling some distance to view. Please note that appliances and heating systems have not been tested and therefore no warranties can be given as to their good working order.