



ENDLESHAM ROAD, SW12

£500,000

- Victorian Conversion
- Share of Freehold
- Courtyard
- Beautiful Finish
- Nightingale Triangle
- Energy Rating C





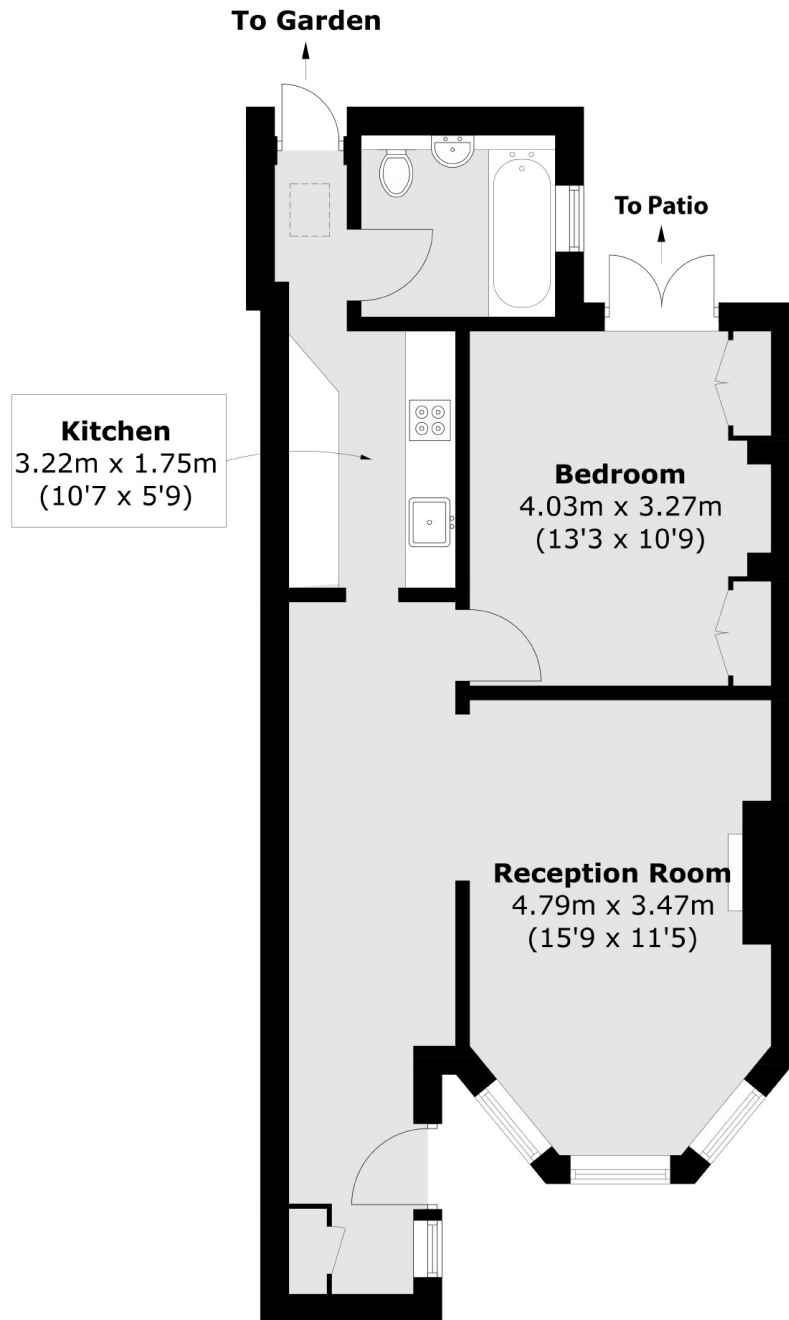
ABOUT THE HOME

Just moments from Central Balham, is this wonderful one bedroom, Victorian Conversion flat. This flat offers a spacious reception room to the front with lovely period fireplace. There is a large bedroom offering access to a patio just before the shared rear garden. At the rear there is a modern kitchen and beautifully presented bathroom.

Endlesham Road runs through the heart of the highly desirable Nightingale Triangle and the flat sits just moments from central Balham, offering excellent transport links (mainline and underground services) and an array of amenities, including shops, bars and restaurants.







Total area (approx.): 50.2 sq. m (540.3 sq. ft)

JACKSONS BALHAM

8-11 Balham Station Road,
London, SW12 9SG
Sales: 020 8675 6555
Lettings: 020 8675 6565

Energy Rating: C We aim to make our particulars both accurate and reliable. However they are not guaranteed; nor do they form part of an offer or contract. If you require clarification on any points then please contact us, especially if you're traveling some distance to view. Please note that appliances and heating systems have not been tested and therefore no warranties can be given as to their good working order.