



BALHAM NEW ROAD, SW12

£875,000

- Freehold
- Private Garden
- Beautifully Finished
- Terraced House
- Clapham South Location
- Energy Rating C





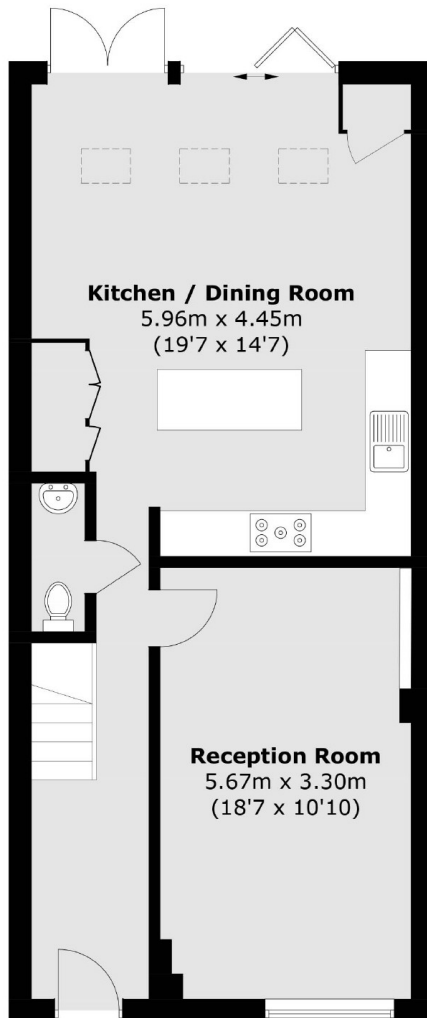
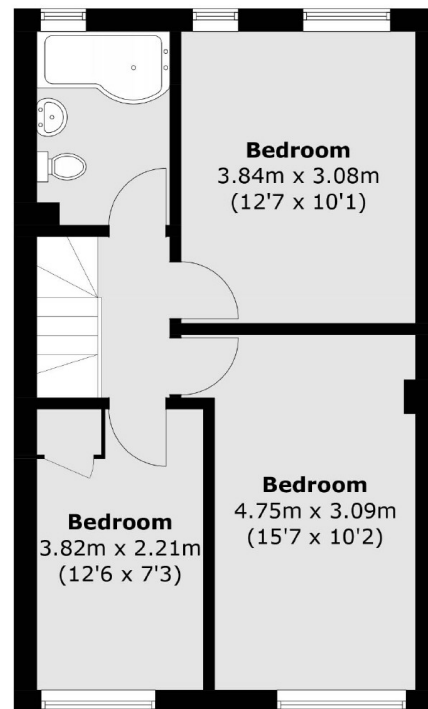
## ABOUT THE HOME

Finished to a beautiful standard throughout is this wonderful three bedroom terraced house on Balham New Road. On the ground floor there is a bright and spacious reception room to the front as well as a large open plan kitchen / dining room with bi-folding doors leading out onto a generous garden. You also have the benefit of an additional downstairs WC. The first floor offers three double bedrooms and a good sized family bathroom.

Balham New Road is within easy access to both Balham and Clapham South stations, offering excellent northern line and mainline services. The green spaces of Tooting Bec Common and Clapham Common are also close by.





**Ground Floor****First Floor**

Total area (approx.): 103.8 sq. m (1,117.2 sq. ft)

**JACKSONS BALHAM**

8-11 Balham Station Road,  
London, SW12 9SG  
Sales: 020 8675 6555  
Lettings: 020 8675 6565

Energy Rating: C We aim to make our particulars both accurate and reliable. However they are not guaranteed; nor do they form part of an offer or contract. If you require clarification on any points then please contact us, especially if you're traveling some distance to view. Please note that appliances and heating systems have not been tested and therefore no warranties can be given as to their good working order.