

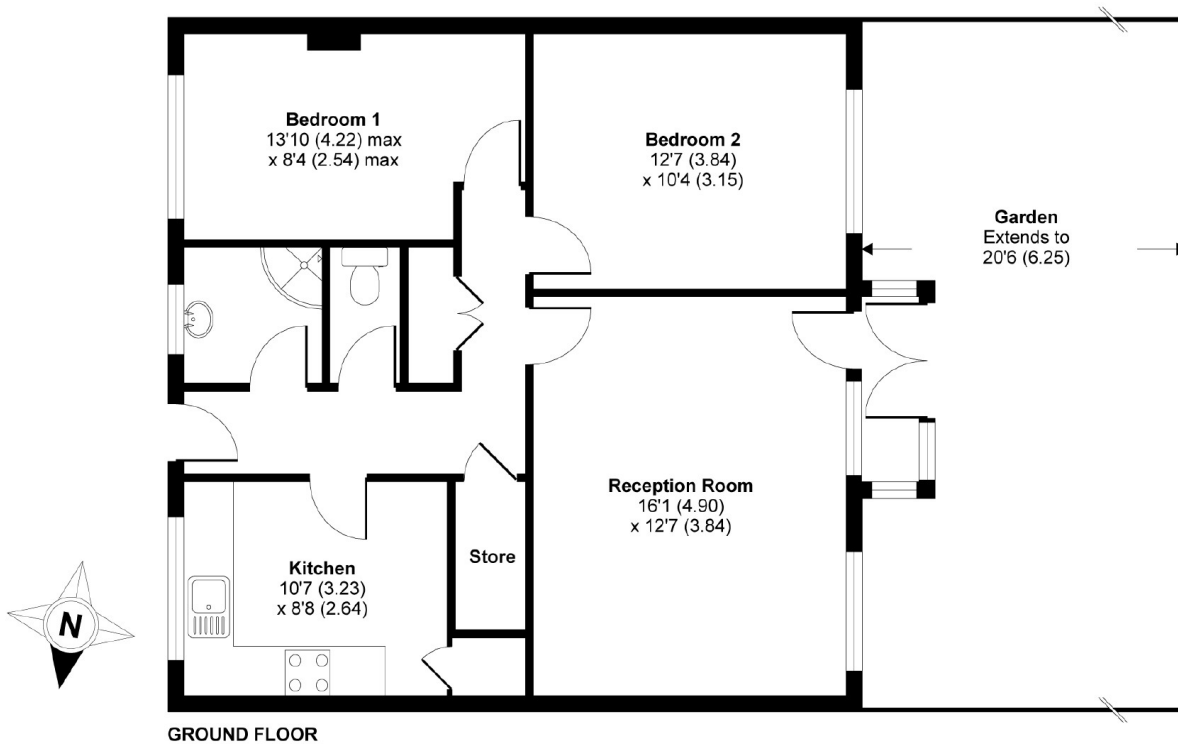
Larch Close, SW12

£1,550 PCM

A two bedroom, ground floor garden flat offered in good condition throughout. This property would be ideal for a professional couple or sharers.

- Ground Floor Flat
- Reception Room
- Modern Fitted Kitchen
- Two Bedrooms
- Private Garden
- Close To Balham Station

For further information on the costs associated with renting a property, please pop into our office or visit our website.



APPROX. GROSS INTERNAL FLOOR AREA 740 SQ FT 68.7 SQ METRES

Larch Close, London, SW12

Copyright nichecom.co.uk 2015 Produced for Jacksons the Independent Estate Agents REF : 15897

Jacksons Balham
8-11 Balham Station Road
London
SW12 9SG
020 8675 6565
balham.lettings@jacksonsestateagents.com

Energy Rating: C We aim to make our particulars both accurate and reliable. However they are not guaranteed; nor do they form part of an offer or contract. If you require clarification on any points then please contact us, especially if you're traveling some distance to view. Please note that appliances and heating systems have not been tested and therefore no warranties can be given as to their good working order.