



Balham High Road, SW17

£2,600 PCM

This stunning brand new two double bedroom luxury apartment comes with an open plan kitchen reception room, two bathrooms and a private balcony. Complete with communal gardens and cycle storage. This

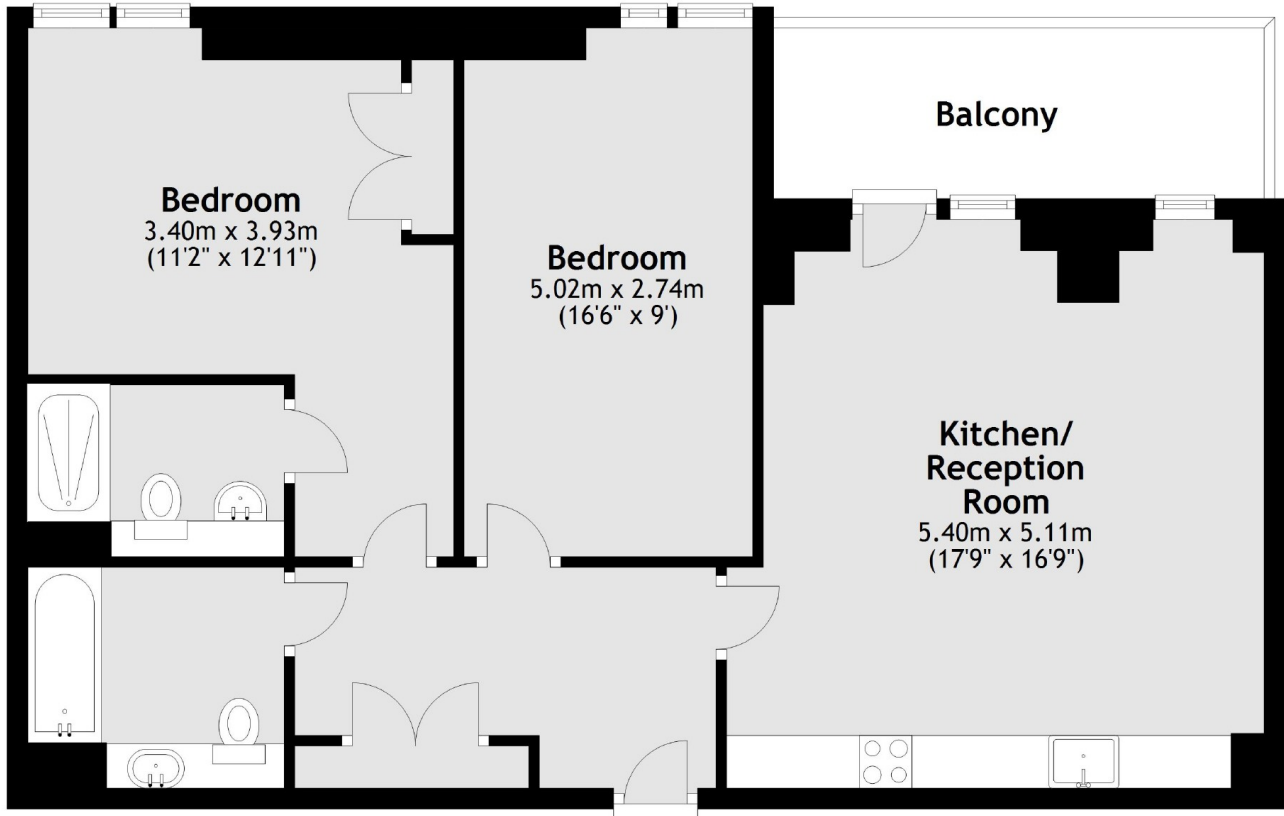
- Open Plan Kitchen Reception Room
- Two Double Bedrooms
- Two Bathrooms
- Private Balcony
- Cycle Storage
- Communal Gardens

For further information on the costs associated with renting a property, please pop into our office or visit our website.



Tramyard apartments is situated in the heart of Balham, this new development allows for easy access to Balham, Tooting Bec and Wandsworth Common stations and an array of local amenities these areas have to offer.





Main area: Approx. 76.0 sq. metres (817.9 sq. feet)

Plus balconies, approx. 8.2 sq. metres (88.1 sq. feet)

Jacksons Balham
8-11 Balham Station Road
London
SW12 9SG
020 8675 6565
balham.lettings@jacksonsestateagents.com

Energy Rating: We aim to make our particulars both accurate and reliable. However they are not guaranteed; nor do they form part of an offer or contract. If you require clarification on any points then please contact us, especially if you're traveling some distance to view. Please note that appliances and heating systems have not been tested and therefore no warranties can be given as to their good working order.