



OAKMEAD ROAD, SW12

£750,000

- Share of Freehold
- Victorian Maisonette
- Ground Floor
- South Facing Garden
- Beautifully Presented
- Energy Rating D





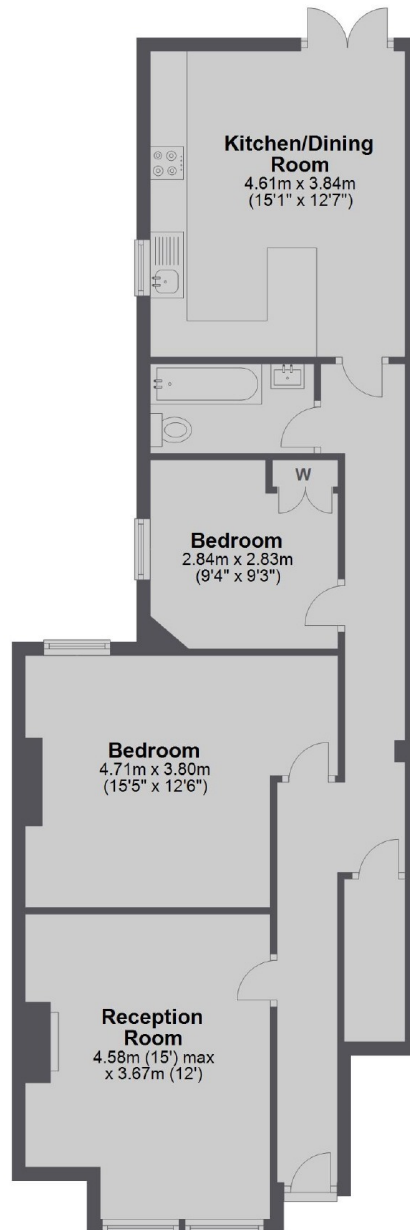
ABOUT THE HOME

A two double bedroom ground floor Victorian maisonette which retains many original features and boasts a spacious kitchen/dining room and a private South facing garden.

Oakmead Road is a residential road just moments from Balham mainline and underground stations as well as all of the shops, bars and restaurants local to the area.





Ground Floor

Total area: approx. 79.4 sq. metres (854.8 sq. feet)

JACKSONS BALHAM

8-11 Balham Station Road,
London, SW12 9SG
Sales: 020 8675 6555
Lettings: 020 8675 6565

Energy Rating: D We aim to make our particulars both accurate and reliable. However they are not guaranteed; nor do they form part of an offer or contract. If you require clarification on any points then please contact us, especially if you're traveling some distance to view. Please note that appliances and heating systems have not been tested and therefore no warranties can be given as to their good working order.