



RADBOURNE ROAD, SW12

£750,000

- Long Leasehold
- Large Garden
- No Onward Chain
- Terraced House
- Hyde Farm Estate
- Energy Rating F





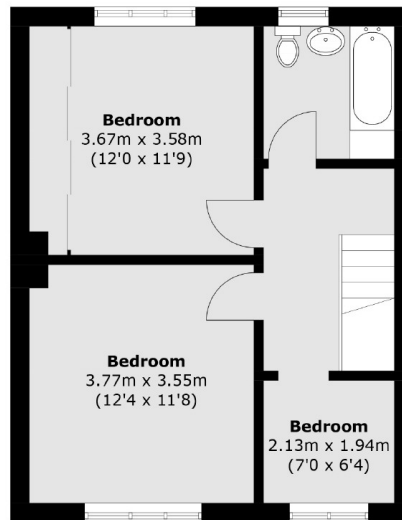
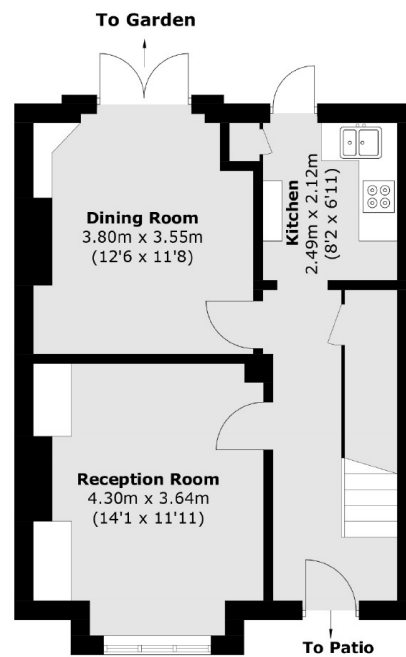
## ABOUT THE HOME

This lovely terraced house on Radbourne Road offers two spacious reception rooms as well as a separate kitchen. On the first floor there are two generous double bedrooms, as well as a third smaller bedroom and a good sized family bathroom. This property also benefits from a large private garden. This property is offered to the market with no onward chain.

Radbourne Road sits in the ever popular Hyde Farm Estate in Balham. There are many local amenities including shops, bars, restaurants and supermarkets and Balham Station is also within easy reach.





**First Floor****Ground Floor**

Total area (approx.): 88.9 sq. m (956.9 sq. ft)

**JACKSONS BALHAM**

8-11 Balham Station Road,  
London, SW12 9SG  
Sales: 020 8675 6555  
Lettings: 020 8675 6565

Energy Rating: F We aim to make our particulars both accurate and reliable. However they are not guaranteed; nor do they form part of an offer or contract. If you require clarification on any points then please contact us, especially if you're traveling some distance to view. Please note that appliances and heating systems have not been tested and therefore no warranties can be given as to their good working order.