

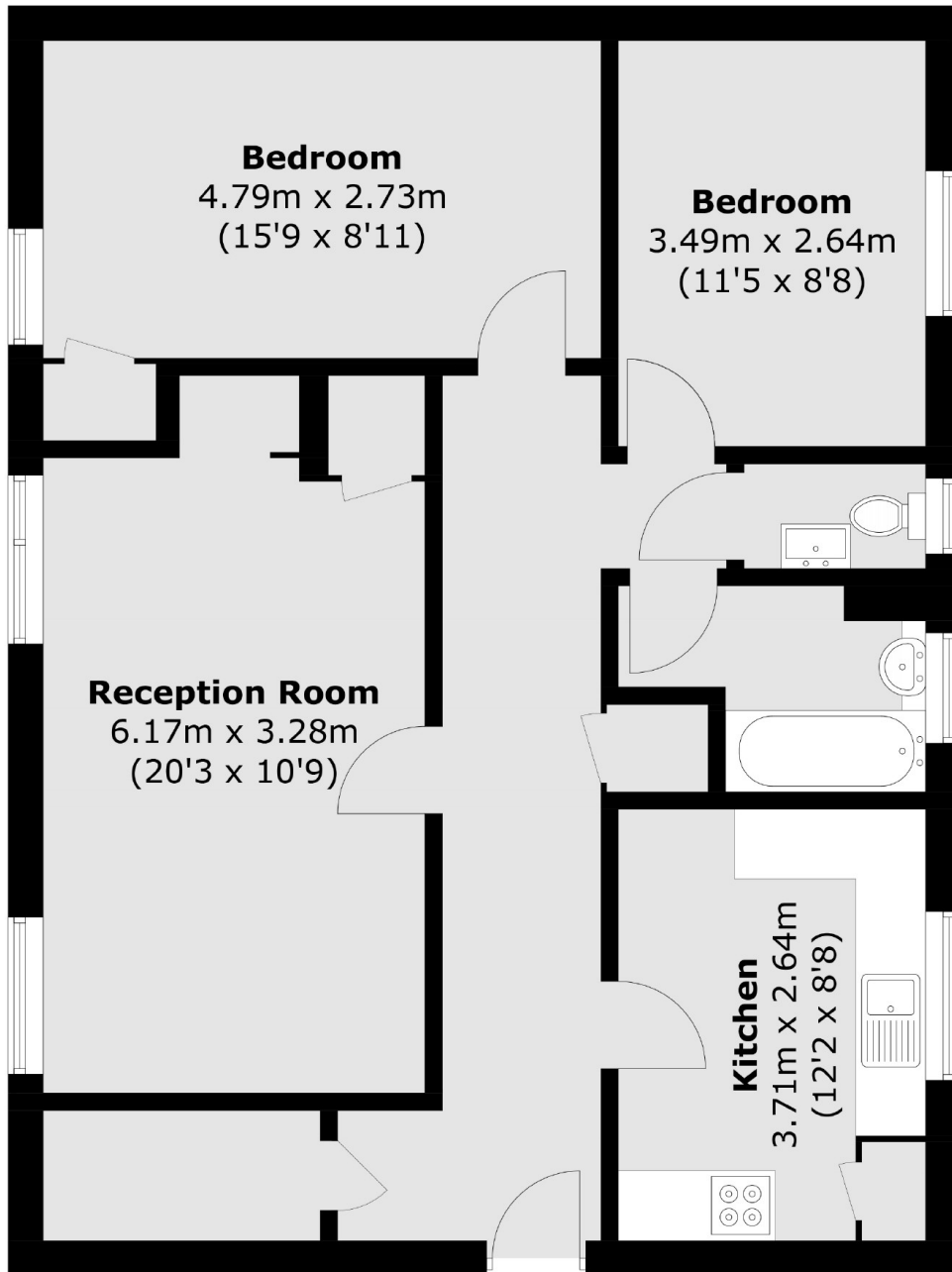


CARMINIA ROAD, SW17

£425,000

- Two Bedrooms
- Separate WC
- Close to Balham Station
- Purpose Built
- Heaver Estate
- Energy Rating C





## First Floor

Total area (approx.): 78.3 sq. m (842.8 sq. ft)

### JACKSONS BALHAM

8-11 Balham Station Road,  
London, SW12 9SG  
Sales: 020 8675 6555  
Lettings: 020 8675 6565

Energy Rating: C We aim to make our particulars both accurate and reliable. However they are not guaranteed; nor do they form part of an offer or contract. If you require clarification on any points then please contact us, especially if you're traveling some distance to view. Please note that appliances and heating systems have not been tested and therefore no warranties can be given as to their good working order.