



CRIFFEL AVENUE, SW2

£700,000

- Open Plan Kitchen/Reception
- Beautiful Finish
- Split Level
- Private Sunny Garden
- Telford Park Estate
- Energy Rating D







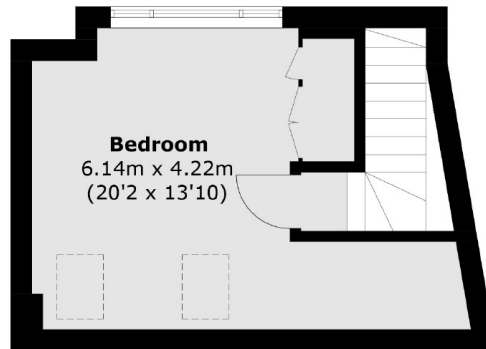
## ABOUT THE HOME

Set in a lovely building is this two double bedroom, split level flat. This property has been finished to a beautiful standard by the current owners. It offers a bright and spacious open plan kitchen / reception room, as well as an additional utility area. There are two generous double bedrooms both offering built in storage. There is also a beautifully finished bathroom.

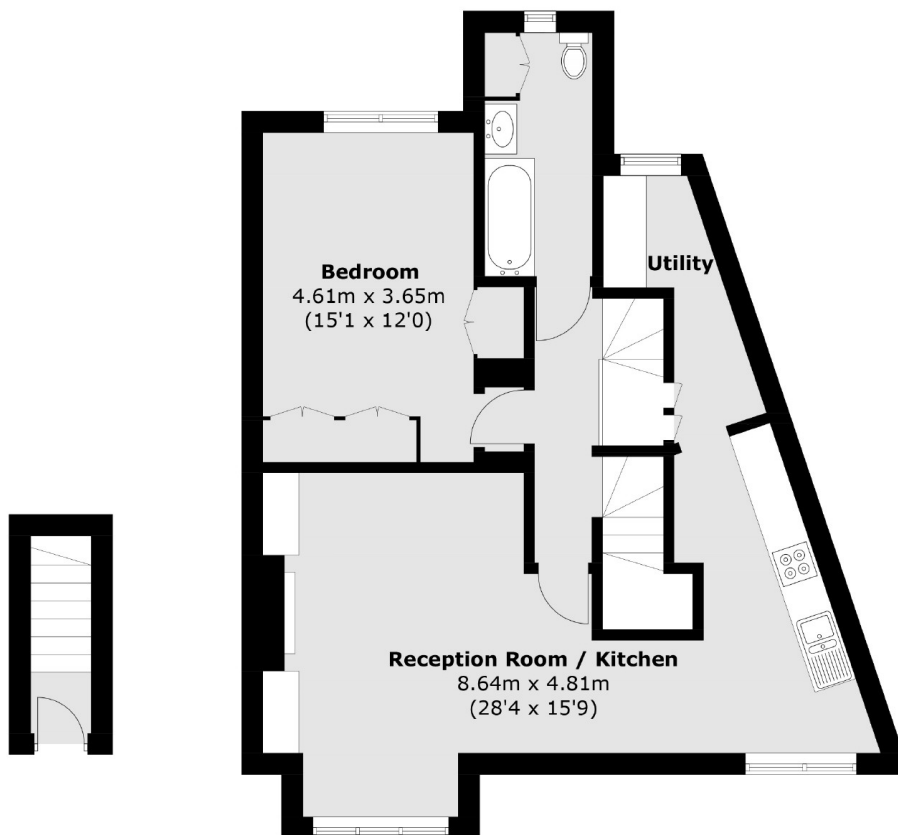
Located on Criffel Avenue, this property is well positioned for easy access into Balham and close to all of the shops, bars and restaurants local to the area. Balham mainline and underground stations are within close proximity as is Streatham Hill mainline station. There are excellent bus routes providing access to Brixton for the Victoria line. Also, the green open spaces of Tooting Bec Common are just minutes away.







### Second Floor



### Ground Floor

### First Floor

Total area (approx.): 92.1 sq. m (991.3 sq. ft)

#### JACKSONS BALHAM

8-11 Balham Station Road,  
London, SW12 9SG  
Sales: 020 8675 6555  
Lettings: 020 8675 6565

Energy Rating: D We aim to make our particulars both accurate and reliable. However they are not guaranteed; nor do they form part of an offer or contract. If you require clarification on any points then please contact us, especially if you're traveling some distance to view. Please note that appliances and heating systems have not been tested and therefore no warranties can be given as to their good working order.