



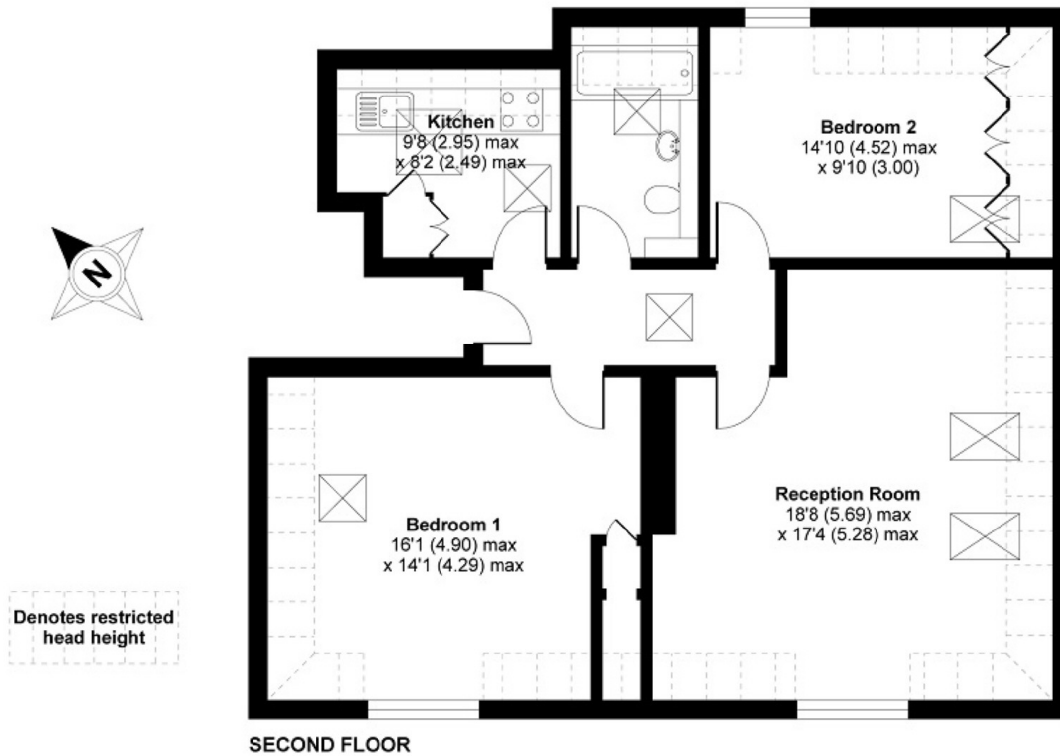
Ramsden Road, SW12

£1,800 PCM

A spacious top floor period conversion flat, offered in excellent condition throughout. This would be an ideal home for a professional couple or professional sharers.

- Top Floor Flat
- Large Reception Room
- Modern Fitted Kitchen
- Two Double Bedrooms
- Good Decorative Order
- Close To Balham Station

For further information on the costs associated with renting a property, please pop into our office or visit our website.



APPROX. GROSS INTERNAL FLOOR AREA 889 SQ FT 82.5 SQ METRES (INCLUDES RESTRICTED HEAD HEIGHT)

Ramsden Road, London, SW12

Copyright nichecom.co.uk 2015 Produced for Jacksons the Independent Estate Agents REF : 20058

Jacksons Balham
8-11 Balham Station Road
London
SW12 9SG
020 8675 6565
balham.lettings@jacksonsestateagents.com

Energy Rating: D We aim to make our particulars both accurate and reliable. However they are not guaranteed; nor do they form part of an offer or contract. If you require clarification on any points then please contact us, especially if you're traveling some distance to view. Please note that appliances and heating systems have not been tested and therefore no warranties can be given as to their good working order.