



RADBOURNE ROAD, SW12

£2,200 PCM

- Large reception room
- Kitchen breakfast room
- Two Bedrooms
- Recently decorated
- Private garden
- Energy rating: D

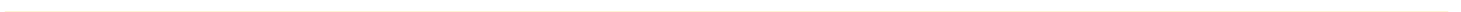




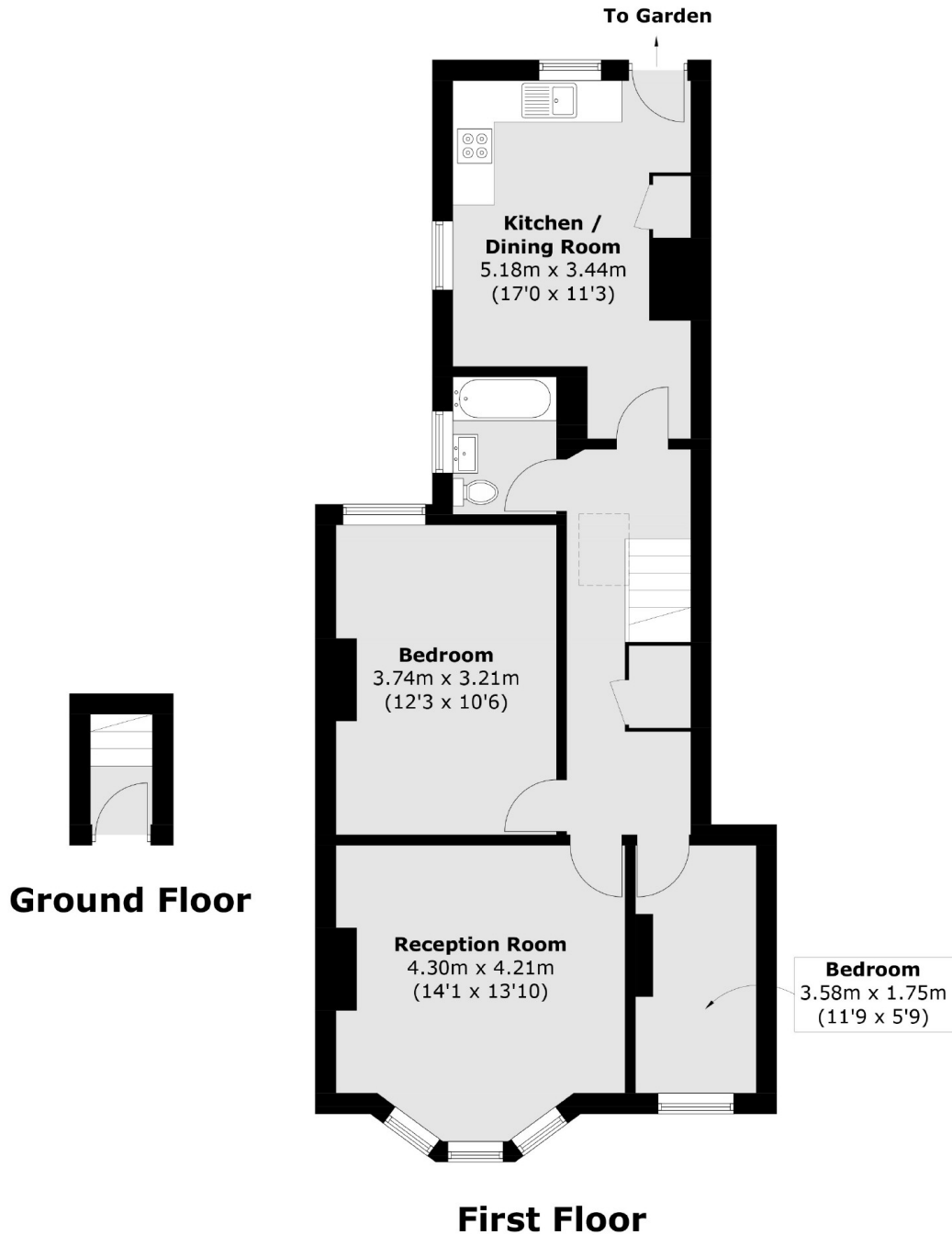
## ABOUT THE HOME

A first floor Victorian maisonette, located in the popular Hyde Farm Conservation area. This property would be perfect for a professional couple or a single occupant.

Located on a quiet residential road in Hyde Farm Estate, close to the open spaces of Tooting Bec Common.





**JACKSONS BALHAM**

8-11 Balham Station Road,  
London, SW12 9SG  
Sales: 020 8675 6555  
Lettings: 020 8675 6565

Energy Rating: D We aim to make our particulars both accurate and reliable. However they are not guaranteed; nor do they form part of an offer or contract. If you require clarification on any points then please contact us, especially if you're traveling some distance to view. Please note that appliances and heating systems have not been tested and therefore no warranties can be given as to their good working order.