



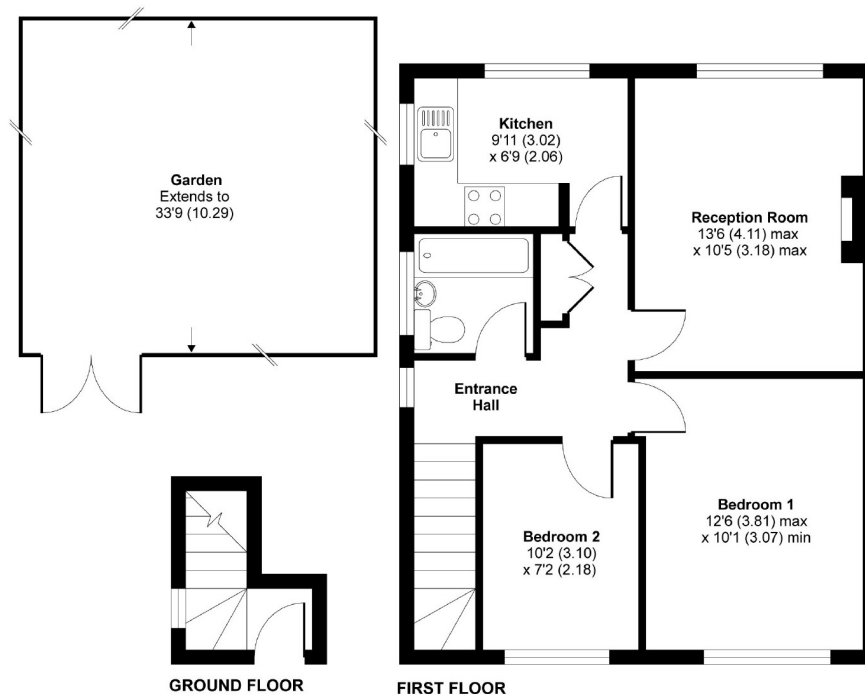
Hyde Thorpe Road, SW12

£1,500 PCM

A well presented two bedroom, first floor maisonette. This property offers ample living space throughout for a professional couple or professional sharers.

- Reception Room
- Modern Kitchen
- Two Double Bedrooms
- Fitted Bathroom
- Private Section Of Garden
- Part Furnished

For further information on the costs associated with renting a property, please pop into our office or visit our website.



APPROX. GROSS INTERNAL FLOOR AREA 573 SQFT / 53.2 SQM

Hydethorpe Road SW12

Copyright nichecom.co.uk 2008 Produced for Jacksons the Independent Estate Agents REF : 08-39813

Jacksons Balham
8-11 Balham Station Road
London
SW12 9SG
020 8675 6565
balham.lettings@jacksonsestateagents.com

Energy Rating: E We aim to make our particulars both accurate and reliable. However they are not guaranteed; nor do they form part of an offer or contract. If you require clarification on any points then please contact us, especially if you're traveling some distance to view. Please note that appliances and heating systems have not been tested and therefore no warranties can be given as to their good working order.