



MIDMOOR ROAD, SW12

£600,000

- Close to Tooting Common
- Victorian Maisonette
- Private Garden
- Period Features
- Hyde Farm Estate
- Energy Rating E





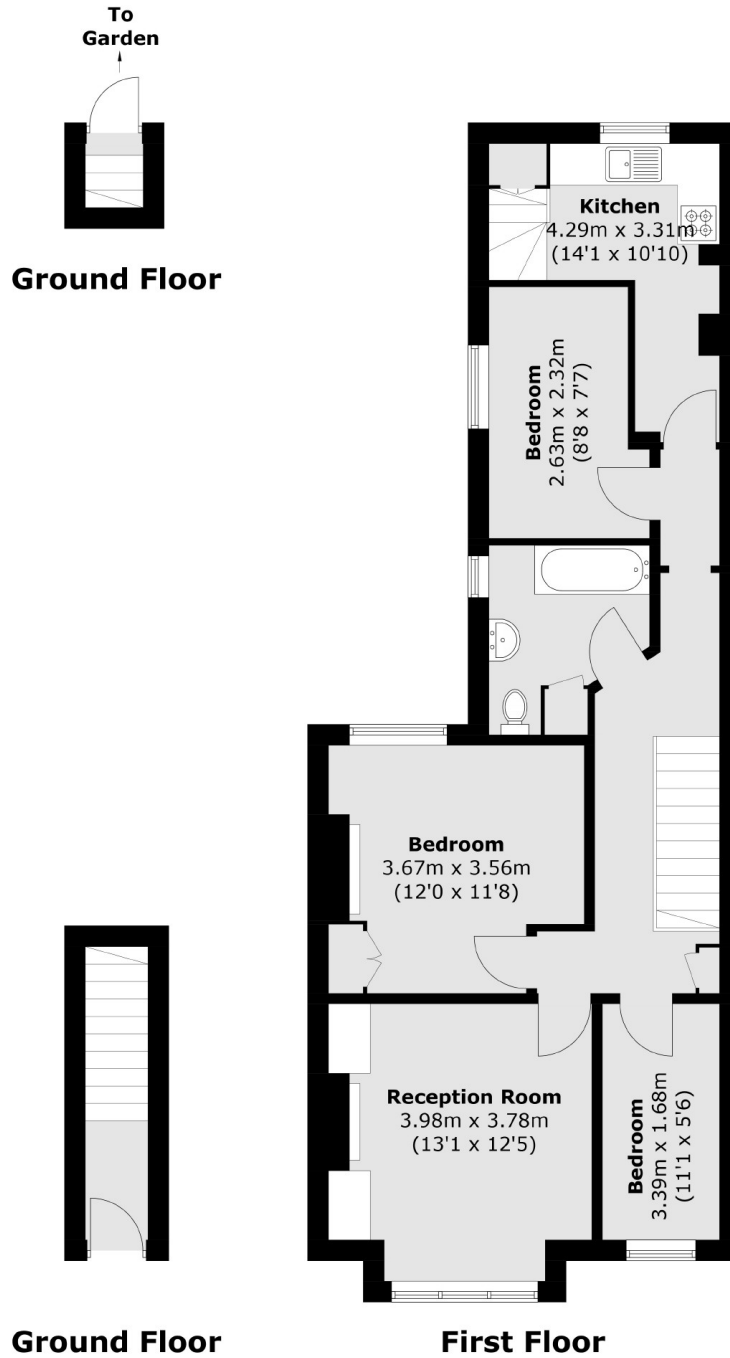
ABOUT THE HOME

A three bedroom, Victorian Maisonette located just moments from Tooting Common. This property benefits from a bright and spacious reception room as well as a separate kitchen with access to a south facing, (Currently not split) private garden.

Located in a highly regarded road in the heart of the Hyde Farm Estate of Balham this property is well situated for easy access to Balham mainline and underground stations offering excellent transport links into the city. The green open spaces of Tooting Bec Common area also within easy reach, which along with the brilliant transport connections into the city, makes this a popular location.







Total area (approx.): 74.6 sq. m (803.0 sq. ft)

JACKSONS BALHAM

8-11 Balham Station Road,
London, SW12 9SG
Sales: 020 8675 6555
Lettings: 020 8675 6565

Energy Rating: E We aim to make our particulars both accurate and reliable. However they are not guaranteed; nor do they form part of an offer or contract. If you require clarification on any points then please contact us, especially if you're traveling some distance to view. Please note that appliances and heating systems have not been tested and therefore no warranties can be given as to their good working order.