



TERRAPIN ROAD, SW17

£1,100,000

- Three Double Bedrooms
- Private Garden
- Beautiful Finish
- Out House
- Heaver Estate
- Energy Rating E



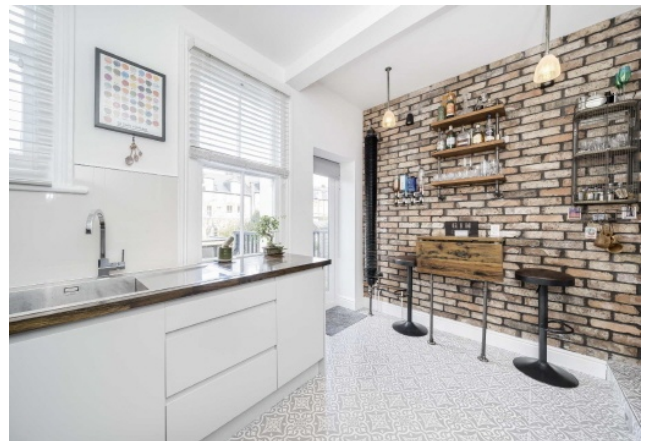


## ABOUT THE HOME

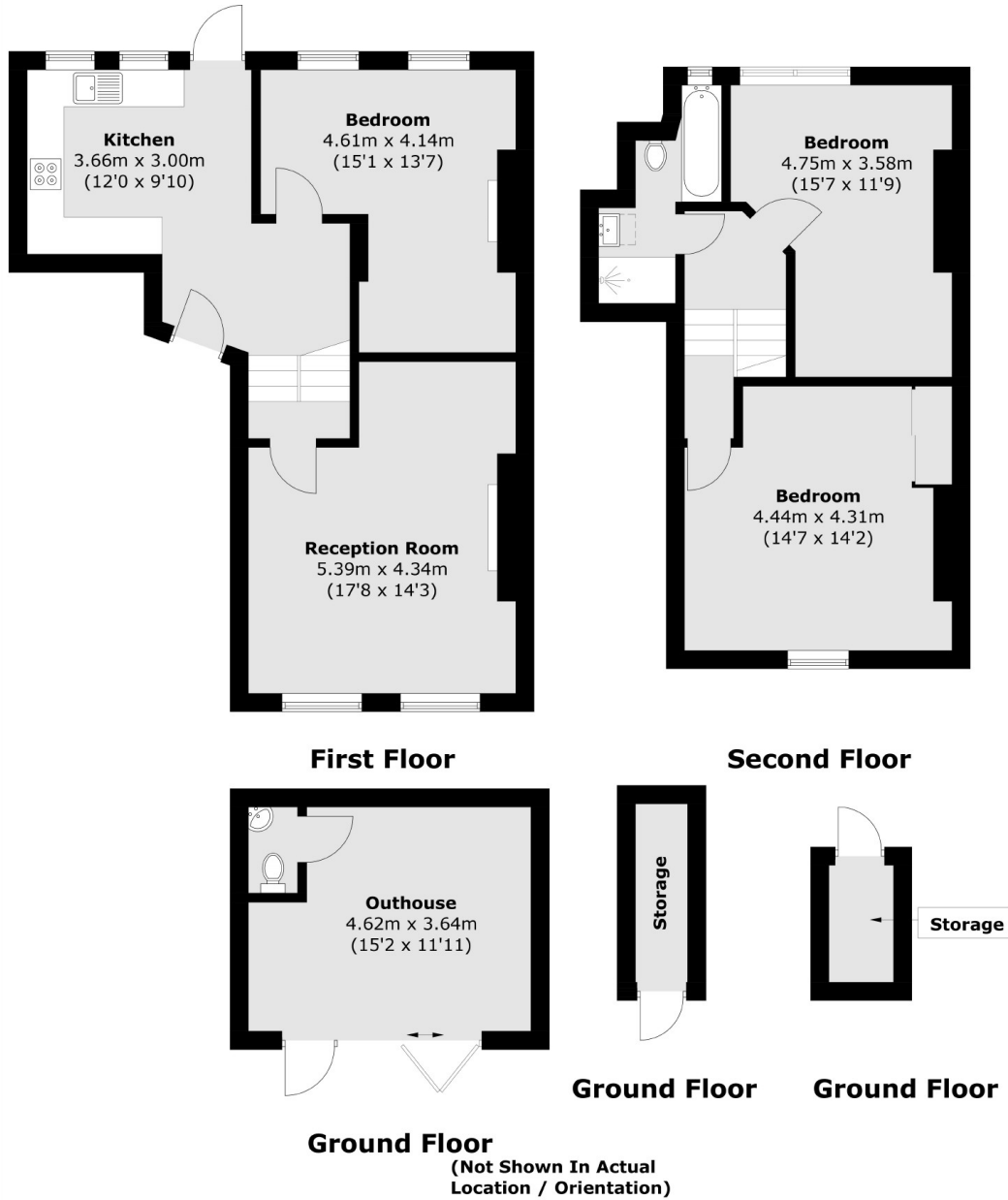
Set in an impressive double fronted building in the heart of the popular Heaver Estate in Balham is this beautifully presented split level, three bedroom garden flat.

This three double bedroom flat is finished to a lovely standard and offers a modern kitchen and a bright and spacious, separate reception room. Accessed via the kitchen is a large, private garden and additional outbuilding, complete with another WC. There are three generous double bedrooms and a good sized family bathroom.

Terrapin Road is a popular residential road in the heart of Balham's popular Heaver Estate. Balham Mainline and underground station is within easy reach as are the vast array of shops, bars and restaurants local to the area. The green spaces of Tooting Common are also a short distance.







Total area (approx.): 100.2 sq. m (1078.5 sq. ft)  
 Outbuilding (approx.): 22.0 sq. m (236.8 sq. ft)

**JACKSONS BALHAM**

8-11 Balham Station Road,  
 London, SW12 9SG  
 Sales: 020 8675 6555  
 Lettings: 020 8675 6565

Energy Rating: E We aim to make our particulars both accurate and reliable. However they are not guaranteed; nor do they form part of an offer or contract. If you require clarification on any points then please contact us, especially if you're traveling some distance to view. Please note that appliances and heating systems have not been tested and therefore no warranties can be given as to their good working order.