



PENTNEY ROAD, SW12

£4,500 PCM

- Victorian house
- Kitchen breakfast room
- Two bathrooms
- Large reception room
- Close to Tooting Bec Common
- Energy rating: D





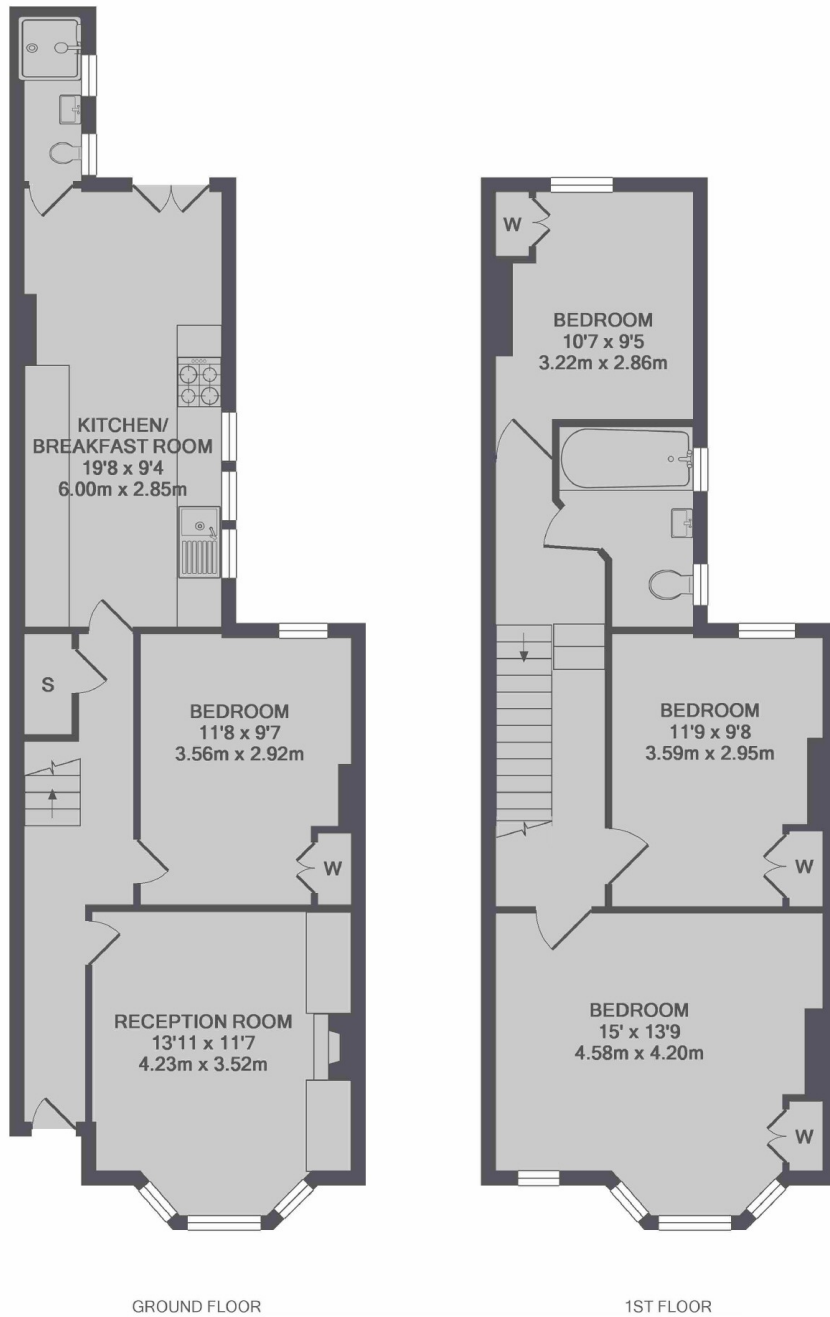
ABOUT THE HOME

A spacious four bedroom terraced house, perfect for professional sharers. The house is split over two floors, offers four generous size double bedrooms, two bathrooms and a private garden.

Pentney Road is located in the ever popular Hyde Farm Conservation Area, which is within close proximity to the open spaces of Tooting Bec Common and the excellent amenities Balham has to offer inclusive of both Northern Line and National Rail services.







TOTAL APPROX. FLOOR AREA 1137 SQ.FT. (105.6 SQ.M.)

JACKSONS BALHAM

8-11 Balham Station Road,
London, SW12 9SG
Sales: 020 8675 6555
Lettings: 020 8675 6565

Energy Rating: D We aim to make our particulars both accurate and reliable. However they are not guaranteed; nor do they form part of an offer or contract. If you require clarification on any points then please contact us, especially if you're traveling some distance to view. Please note that appliances and heating systems have not been tested and therefore no warranties can be given as to their good working order.