



BURNBURY ROAD, SW12

£900,000

- Three Double Bedrooms
- Split-Level
- Modern Finish
- South Facing Garden
- Victorian Maisonette
- Energy Rating D





ABOUT THE HOME

A beautifully presented three bedroom two bathroom split-level Victorian Maisonette with a private south facing garden.

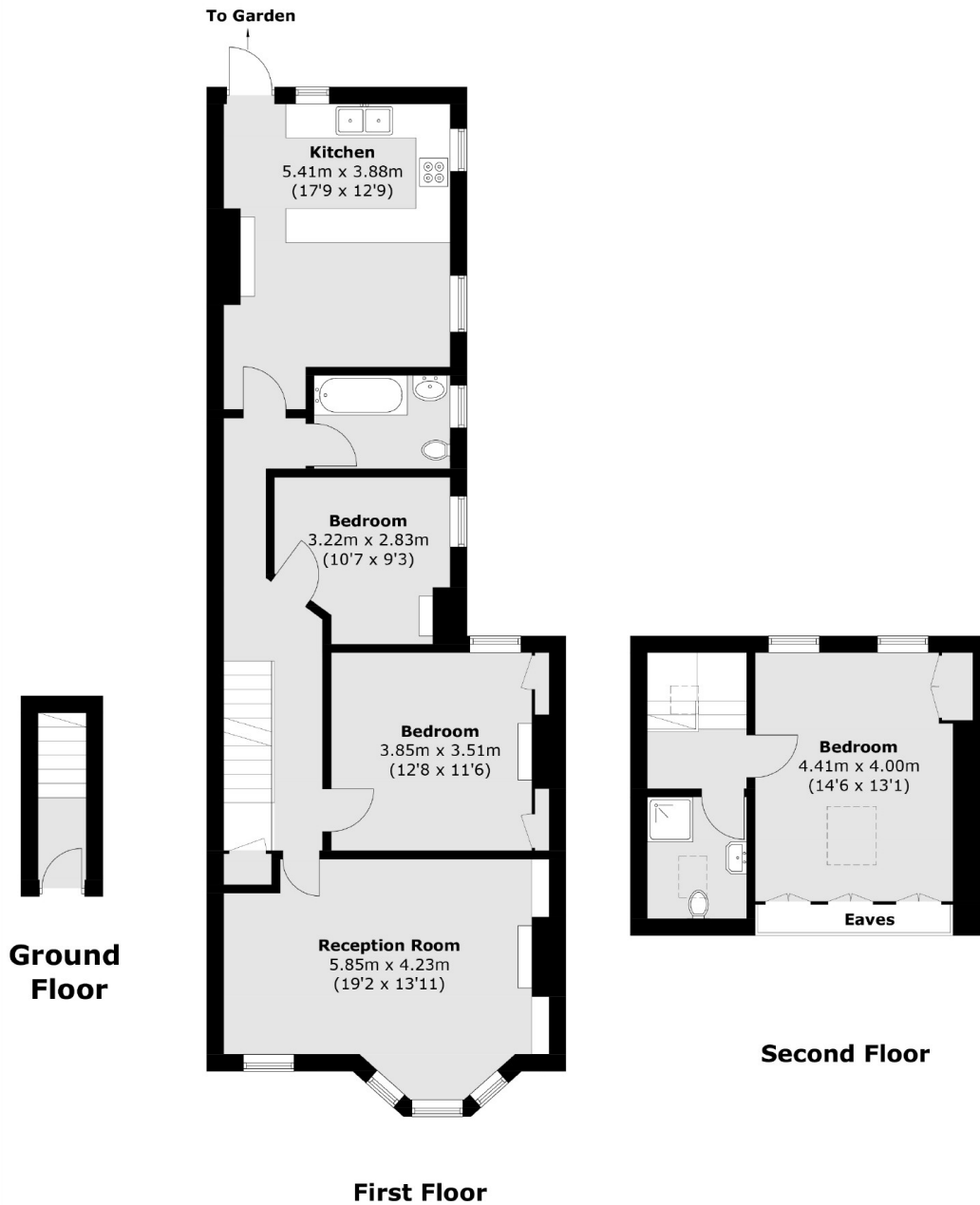
Accessed via its own front door this home spans over 1100sft and offers a reception room to the front, with a bay window and a fireplace, a large double bedroom, a further bedroom, a stylish bathroom and a modern kitchen/breakfast room. Stairs lead down to a large private garden and the loft has been converted to create a wonderfully bright bedroom and additional bathroom.

Accessed via its own front door this home spans over 1100sft and offers a reception room to the front, with a bay window and a fireplace, a large double bedroom, a further bedroom, a stylish bathroom and a modern kitchen/breakfast room. Stairs lead down to a large private garden and the loft has been converted to create a wonderfully bright bedroom and additional bathroom.

Burnbury Road is situated within the Hyde Farm area within close proximity to Balham and just moments from the green spaces of Tooting Bec Common. It is well located for easy access to Balham underground and







Total area (approx.): 108.5 sq. m (1167.7 sq. ft)
(Excluding Eaves)

JACKSONS BALHAM

8-11 Balham Station Road,
London, SW12 9SG
Sales: 020 8675 6555
Lettings: 020 8675 6565

Energy Rating: D We aim to make our particulars both accurate and reliable. However they are not guaranteed; nor do they form part of an offer or contract. If you require clarification on any points then please contact us, especially if you're traveling some distance to view. Please note that appliances and heating systems have not been tested and therefore no warranties can be given as to their good working order.