



BOUNDARIES ROAD, SW12

£760,000

- Well Maintained Building
- Spacious Reception Room
- Modern Fitted Kitchen
- Secure Underground Parking
- Large Private Balcony
- Energy Rating D







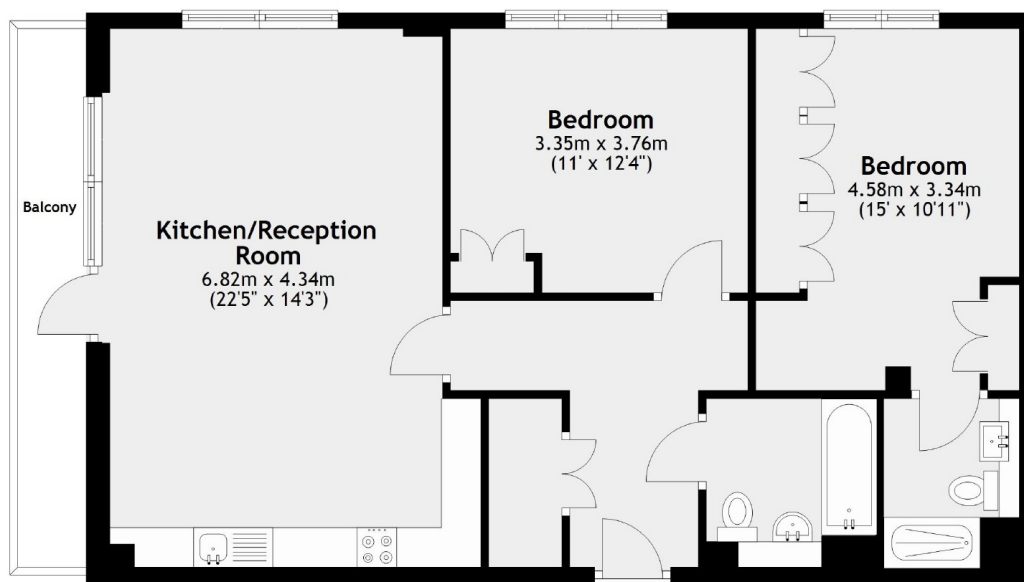
## ABOUT THE HOME

Located in a well maintained development is this bright and spacious flat. This property is finished to a beautiful standard and offers two generous double bedrooms as well as two modern bathrooms. There is ample built in storage throughout the property and a large private balcony. This property also benefits from secure underground parking within the development and no onward chain.

Penrose Court is a modern gated development on Boundaries Road just moments from Balham and all of the amenities on offer, including the shops, bars and restaurants as well as the mainline and underground stations. The wide open spaces of Wandsworth Common are also close by.







Main area: Approx. 79.2 sq. metres (852.3 sq. feet)  
Plus balconies, approx. 6.6 sq. metres (71.0 sq. feet)

#### JACKSONS BALHAM

8-11 Balham Station Road,  
London, SW12 9SG  
Sales: 020 8675 6555  
Lettings: 020 8675 6565

Energy Rating: B We aim to make our particulars both accurate and reliable. However they are not guaranteed; nor do they form part of an offer or contract. If you require clarification on any points then please contact us, especially if you're traveling some distance to view. Please note that appliances and heating systems have not been tested and therefore no warranties can be given as to their good working order.