



FIELDHOUSE ROAD, SW12

£750,000

- First Floor Maisonette
- Bright & Spacious Reception
- Share Of Freehold
- Private Garden
- Close to Tooting Common
- Energy Rating C





ABOUT THE HOME

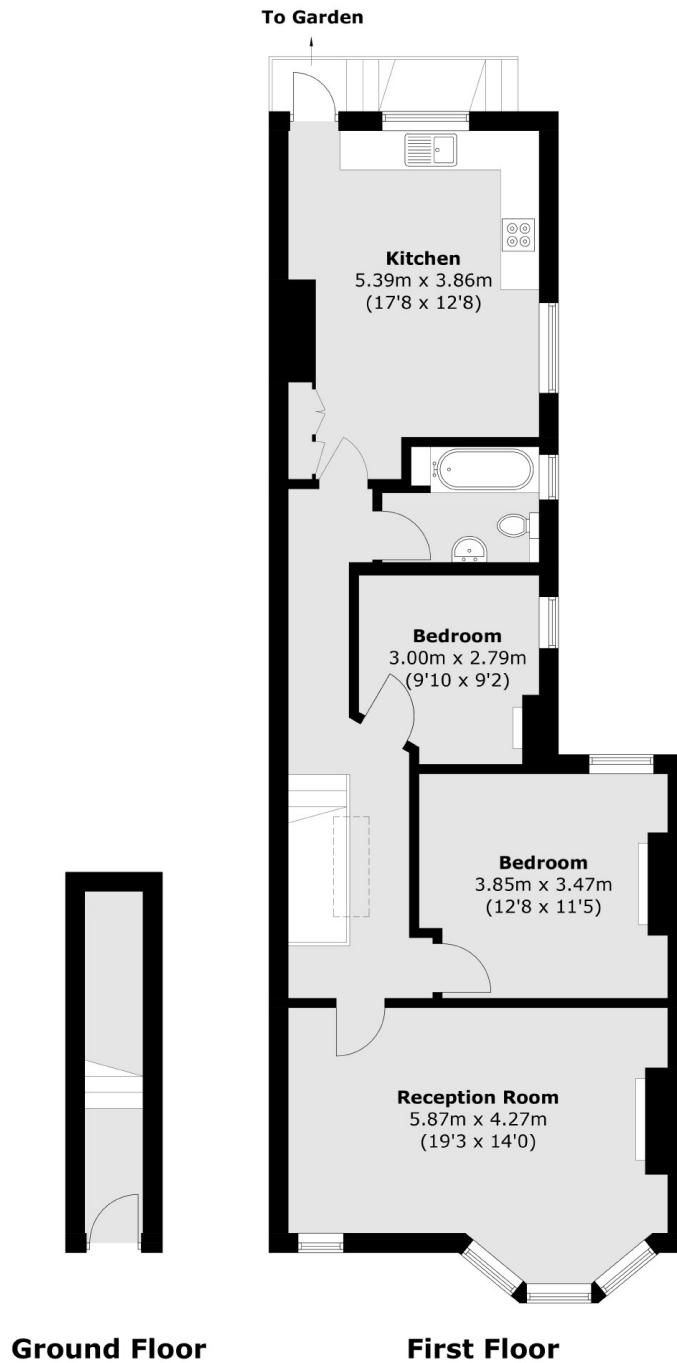
Lying just moments from Tooting Common is this two double bedroom, first floor Victorian Maisonette.

This property offers a large reception room to the front with ample room for either a dining table or home office. There are two good sized double bedrooms as well as a spacious, modern bathroom. To the rear of the property there is a large kitchen with stairs leading down onto a private garden.

Located on Fieldhouse Road in the Hyde Farm area it is well situated for easy access to Balham. The north side of Tooting Bec Common lies just moments away at the end of the road and the shops, bars, restaurants and supermarkets local to the area are within easy reach.







Total area (approx.): 86.9 sq. m (935.3 sq. ft)

JACKSONS BALHAM

8-11 Balham Station Road,
London, SW12 9SG
Sales: 020 8675 6555
Lettings: 020 8675 6565

Energy Rating: C We aim to make our particulars both accurate and reliable. However they are not guaranteed; nor do they form part of an offer or contract. If you require clarification on any points then please contact us, especially if you're traveling some distance to view. Please note that appliances and heating systems have not been tested and therefore no warranties can be given as to their good working order.