



BURNBURY ROAD, SW12

£750,000

- Chain Free
- Own Front Door
- Private Garden
- Spacious Kitchen
- Hyde Farm Estate
- Energy Rating C





ABOUT THE HOME

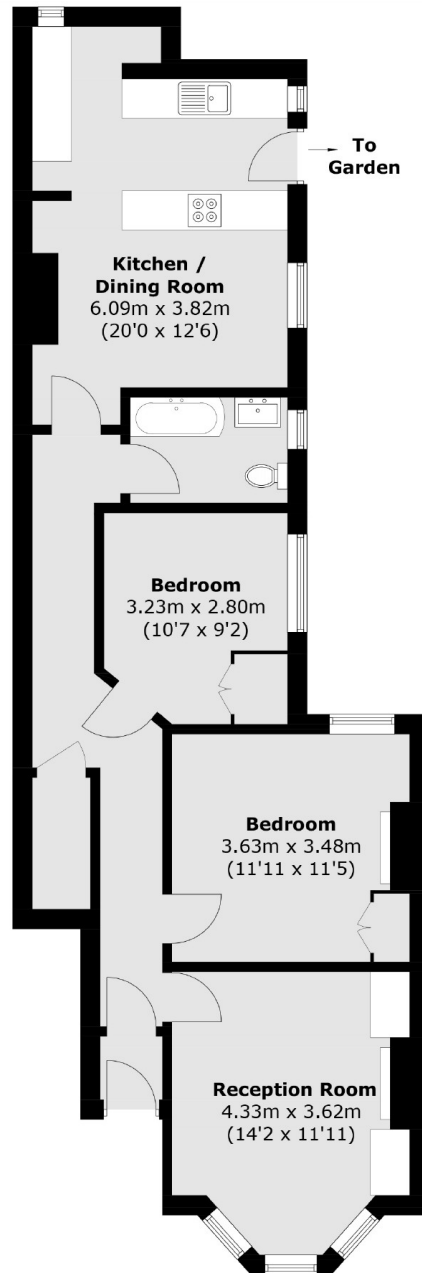
Located in the popular Hyde Farm Estate in Balham is this two double bedroom ground floor maisonette with a sunny private garden.

This property offers a large kitchen with ample room for dining. At the front of the property there is a bright and spacious reception room with built in storage. There are two generous double bedrooms and spacious bathroom.

Burnbury Road is part of a wonderful community, is within close proximity to Henry Cavendish and Telferscot Primary schools, and well situated for easy access to Balham mainline and underground stations (Northern Line). Tooting Bec Common, shops, bars, restaurants and other local amenities of Balham and Streatham Hill are also close by.







Ground Floor

Total area (approx.): 77.0 sq. m (828.8 sq. ft)

JACKSONS BALHAM

8-11 Balham Station Road,
London, SW12 9SG
Sales: 020 8675 6555
Lettings: 020 8675 6565

Energy Rating: C We aim to make our particulars both accurate and reliable. However they are not guaranteed; nor do they form part of an offer or contract. If you require clarification on any points then please contact us, especially if you're traveling some distance to view. Please note that appliances and heating systems have not been tested and therefore no warranties can be given as to their good working order.