



TENHAM AVENUE, SW2

£735,000

- First Floor Maisonette
- Bright and Spacious
- Large Reception Room
- Modern Fitted Kitchen
- Sunny Private Garden
- Energy Rating C





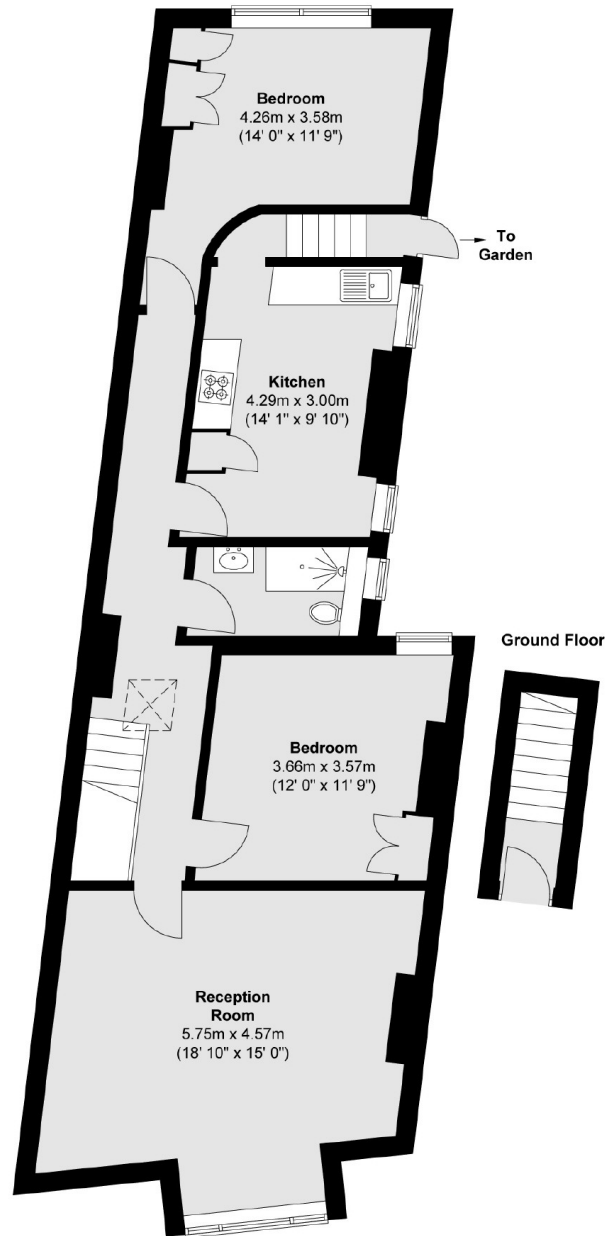
ABOUT THE HOME

Located on Tenham Avenue is this beautifully presented two double bedroom, first floor maisonette. This property offers bright and spacious living accommodation as well as a private, sunny garden.

Tenham Avenue is a popular residential road which runs off Emmanuel Road in Balham's Telford Park Estate. Balham mainline and underground station is within easy reach as are the vast array of shops, bars and restaurants local to the area. The green open spaces of Tooting Bec Common are also close by.







Total area (approx.) : 89 sq. m (958 sq. ft)

JACKSONS BALHAM

8-11 Balham Station Road,
London, SW12 9SG
Sales: 020 8675 6555
Lettings: 020 8675 6565

Energy Rating: C We aim to make our particulars both accurate and reliable. However they are not guaranteed; nor do they form part of an offer or contract. If you require clarification on any points then please contact us, especially if you're traveling some distance to view. Please note that appliances and heating systems have not been tested and therefore no warranties can be given as to their good working order.