



## LINNET MEWS, SW12

£650,000

- Spacious Reception Room
- Modern Kitchen
- Private Garden
- Allocated Parking Space
- Nightingale Triangle Location
- Energy Rating C





## ABOUT THE HOME

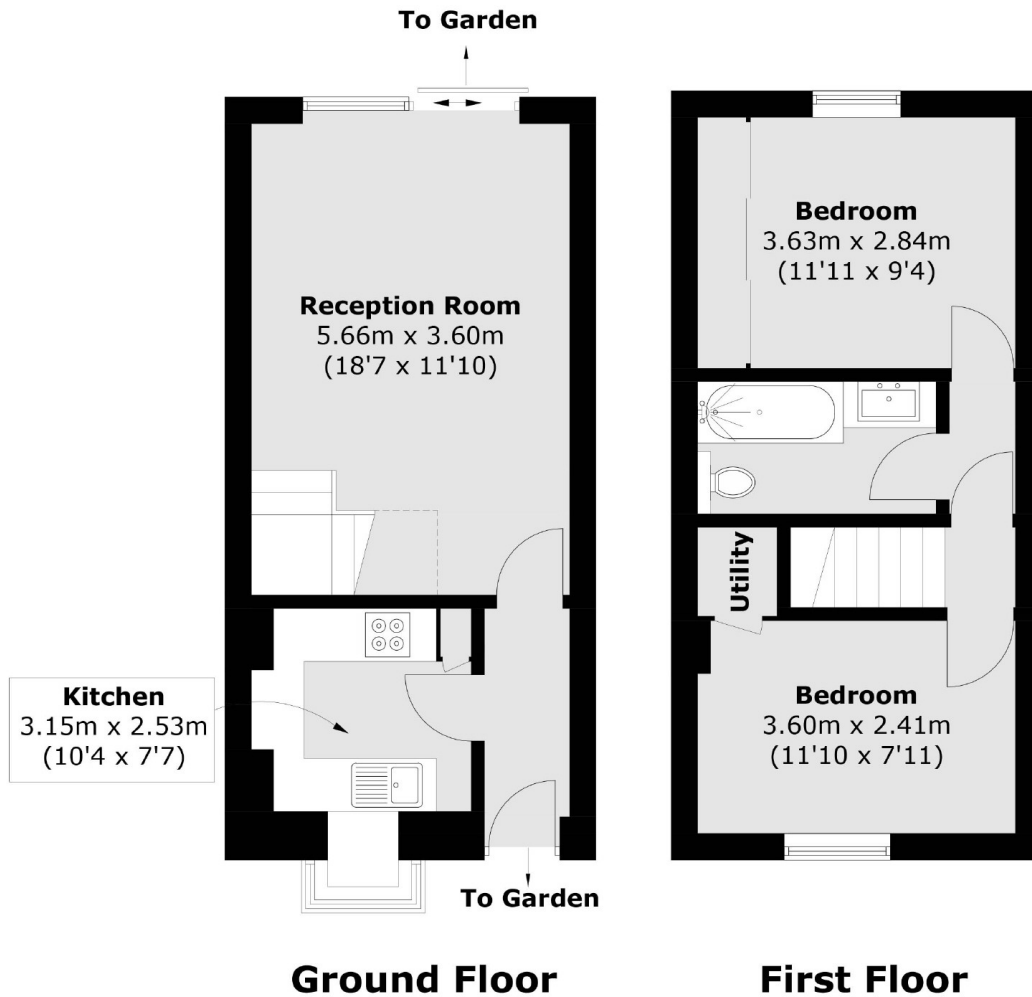
Set in a quiet mews is this lovely two double bedroom, freehold house. This property benefits from a private garden and allocated parking space.

This property offers a modern kitchen as well as a bright and spacious reception room. On the second floor there are two good sized double bedrooms and spacious bathroom.

Linnet Mews is a quiet residential mews ideally situated between Balham and Wandsworth Common and the abundance of shops, bars and restaurants these locations have to offer.







Total area (approx.): 57.9 sq. m (623.2 sq. ft)

#### JACKSONS BALHAM

8-11 Balham Station Road,  
London, SW12 9SG  
Sales: 020 8675 6555  
Lettings: 020 8675 6565

Energy Rating: C We aim to make our particulars both accurate and reliable. However they are not guaranteed; nor do they form part of an offer or contract. If you require clarification on any points then please contact us, especially if you're traveling some distance to view. Please note that appliances and heating systems have not been tested and therefore no warranties can be given as to their good working order.