



SALFORD ROAD, SW2

£650,000

- Beautifully Finished
- Spacious Kitchen/Diner
- South West Facing Garden
- Victorian Conversion
- Telford Park Estate
- Energy Rating D





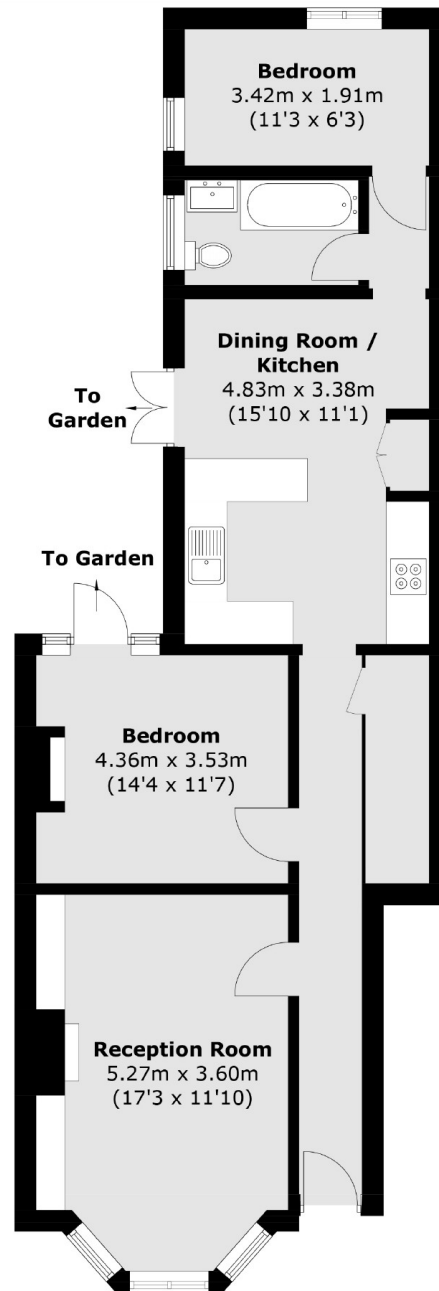
ABOUT THE HOME

Located just moments from Tooting Common is this lovely ground floor, Victorian conversion flat. This beautifully finished property offers generous living accommodation and a large south west facing garden.

Salford Road is a popular residential road which runs off Emmanuel Road in Balham's Telford Park Estate. Balham mainline and underground station is within easy reach as are the vast array of shops, bars and restaurants local to the area. The green open spaces of Tooting Bec Common are also close by.







Ground Floor

Total area (approx.): 70.2 sq. m (755.6 sq. ft)

JACKSONS BALHAM

8-11 Balham Station Road,
London, SW12 9SG
Sales: 020 8675 6555
Lettings: 020 8675 6565

Energy Rating: D We aim to make our particulars both accurate and reliable. However they are not guaranteed; nor do they form part of an offer or contract. If you require clarification on any points then please contact us, especially if you're traveling some distance to view. Please note that appliances and heating systems have not been tested and therefore no warranties can be given as to their good working order.