



RAMSDEN ROAD, SW12

£725,000

- Victorian Conversion Flat
- Modern Fitted Kitchen
- Two Bathrooms
- Immaculate Finish
- Nightingale Triangle
- Energy Rating D





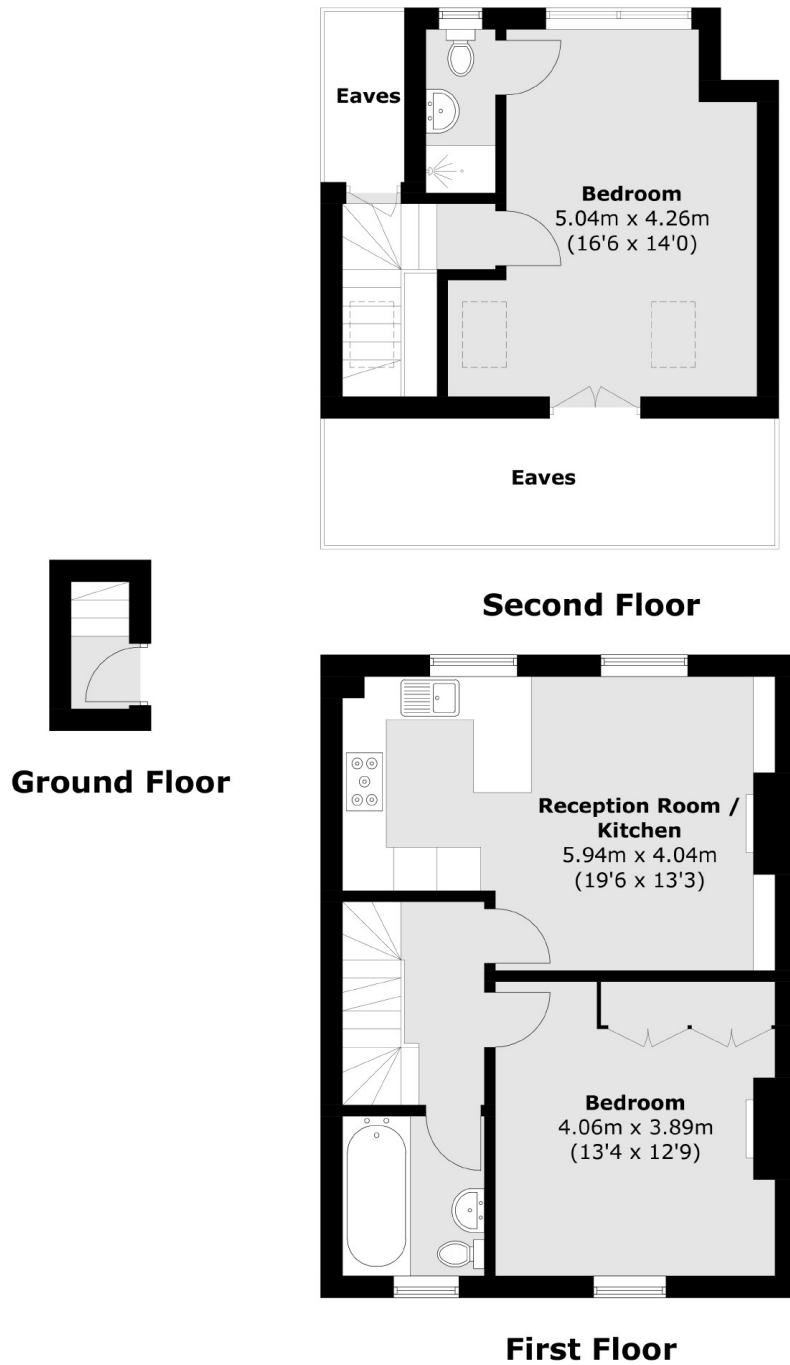
## ABOUT THE HOME

Located on a popular residential road in the Nightingale Triangle, is the beautiful two bedroom, Victorian Conversion flat. This lovely property retains original period features as well as offering a modern fitted kitchen leading into an open plan living room. There are two generous double bedrooms as well as two modern bathrooms.

Ramsden Road is a popular road in the heart of Balham's popular Nightingale Triangle. Balham mainline and Underground stations are within easy reach as are the vast array of shops, bars and restaurants local to the area. The green open spaces of Wandsworth Common are also close by.







Total area (approx.): 76.1 sq. m (819.1 sq. ft)  
(Excluding Eaves)

#### JACKSONS BALHAM

8-11 Balham Station Road,  
London, SW12 9SG  
Sales: 020 8675 6555  
Lettings: 020 8675 6565

Energy Rating: D We aim to make our particulars both accurate and reliable. However they are not guaranteed; nor do they form part of an offer or contract. If you require clarification on any points then please contact us, especially if you're traveling some distance to view. Please note that appliances and heating systems have not been tested and therefore no warranties can be given as to their good working order.