



BURNBURY ROAD, SW12

£775,000

- First Floor
- Victorian Maisonette
- Demised Loft Space
- Private Garden
- Hyde Farm Estate
- Energy Rating D







## ABOUT THE HOME

Located in the popular Hyde Farm Estate in Balham is this two double bedroom first floor maisonette.

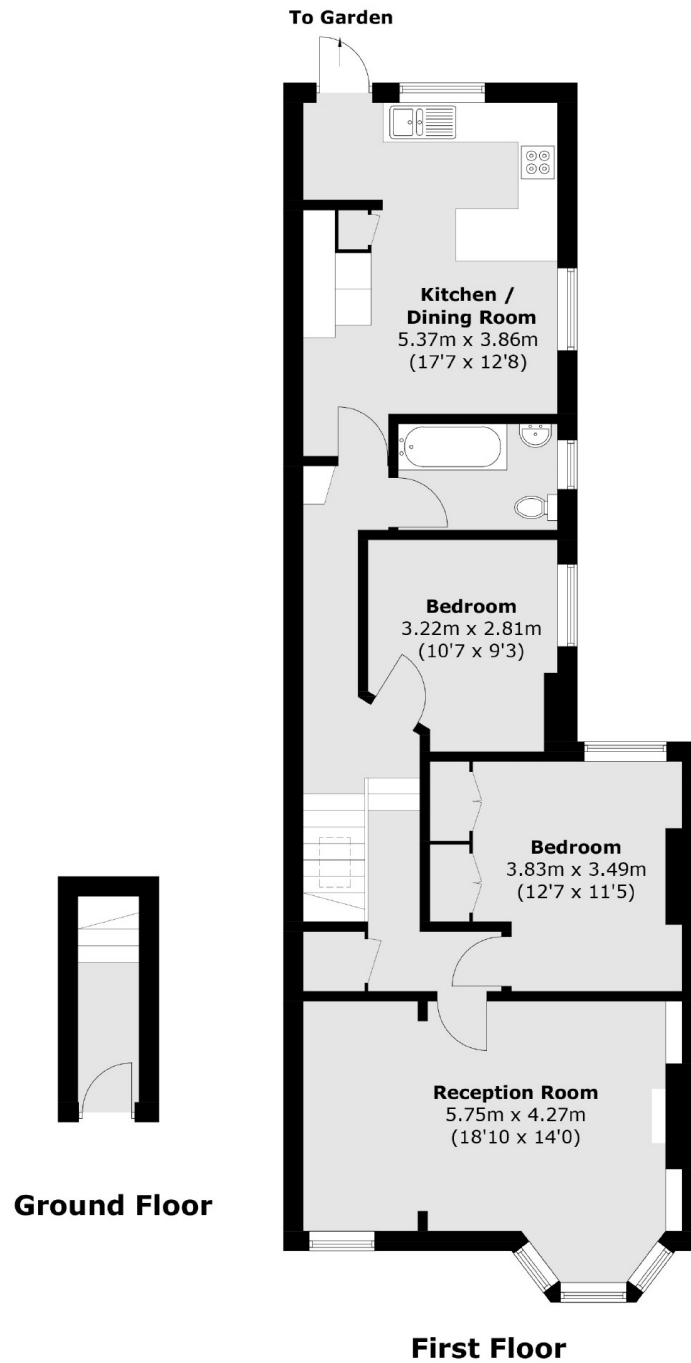
This property offers a large, modern kitchen with plenty of room for dining. At the front of the property there is a bright and spacious reception room with built in storage and room for a home office area. There are two good sized bedrooms as well as a modern bathroom.

Burnbury Road is part of a wonderful community, is within close proximity to Henry Cavendish and Telferscot Primary schools, and well situated for easy access to Balham mainline and underground stations (Northern Line). Tooting Bec Common, shops, bars, restaurants and other local amenities of Balham and Streatham Hill are also close by.









Total area (approx.): 84.0 sq. m (904.2 sq. ft)

#### JACKSONS BALHAM

8-11 Balham Station Road,  
London, SW12 9SG  
Sales: 020 8675 6555  
Lettings: 020 8675 6565

Energy Rating: D We aim to make our particulars both accurate and reliable. However they are not guaranteed; nor do they form part of an offer or contract. If you require clarification on any points then please contact us, especially if you're traveling some distance to view. Please note that appliances and heating systems have not been tested and therefore no warranties can be given as to their good working order.