

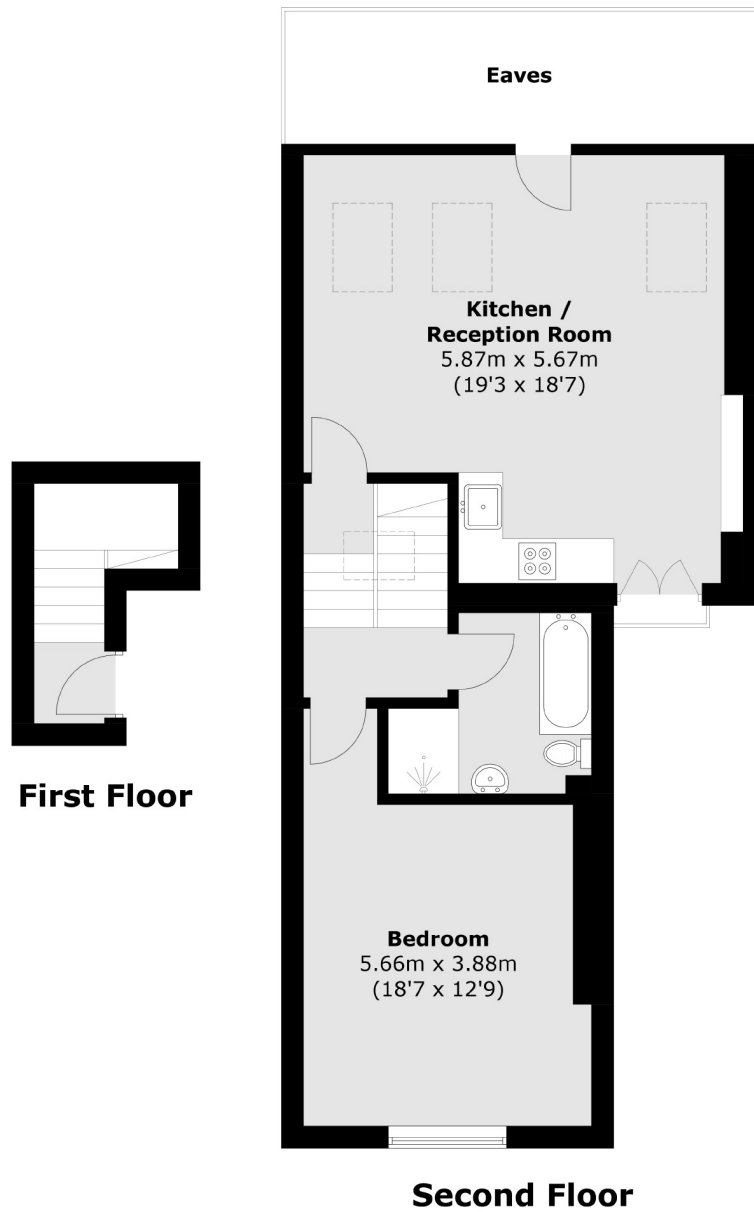


## Mayford Road, SW12

£475,000

Offering generous living space is this lovely one double bedroom, top floor flat located on a popular residential road in the Nightingale Triangle. This flat is presented to a modern finish and is offered to the market with a share of the freehold and no onward chain.

- One Double Bedroom
- Open Plan Kitchen / Reception
- Juliet Balcony
- Share of Freehold
- No Onward Chain
- Nightingale Triangle



Total area (approx.): 67.7 sq. m (728.8 sq. ft)

Jacksons Balham  
8-11 Balham Station Road  
London  
SW12 9SG  
020 8675 6555  
balham.sales@jacksonsestateagents.com

Energy Rating: We aim to make our particulars both accurate and reliable. However they are not guaranteed; nor do they form part of an offer or contract. If you require clarification on any points then please contact us, especially if you're traveling some distance to view. Please note that appliances and heating systems have not been tested and therefore no warranties can be given as to their good working order.