



Bushnell Road, SW17

£975,000

Set in an impressive Victorian building in the popular Heaver Estate is this large, two double bedroom flat. This property benefits from a large south west facing garden and a share of the freehold.

- Two Double Bedrooms
- Large Kitchen / Dining Room
- South-West Facing Garden
- Rear Extension Permission
- Share of Freehold
- Heaver Estate

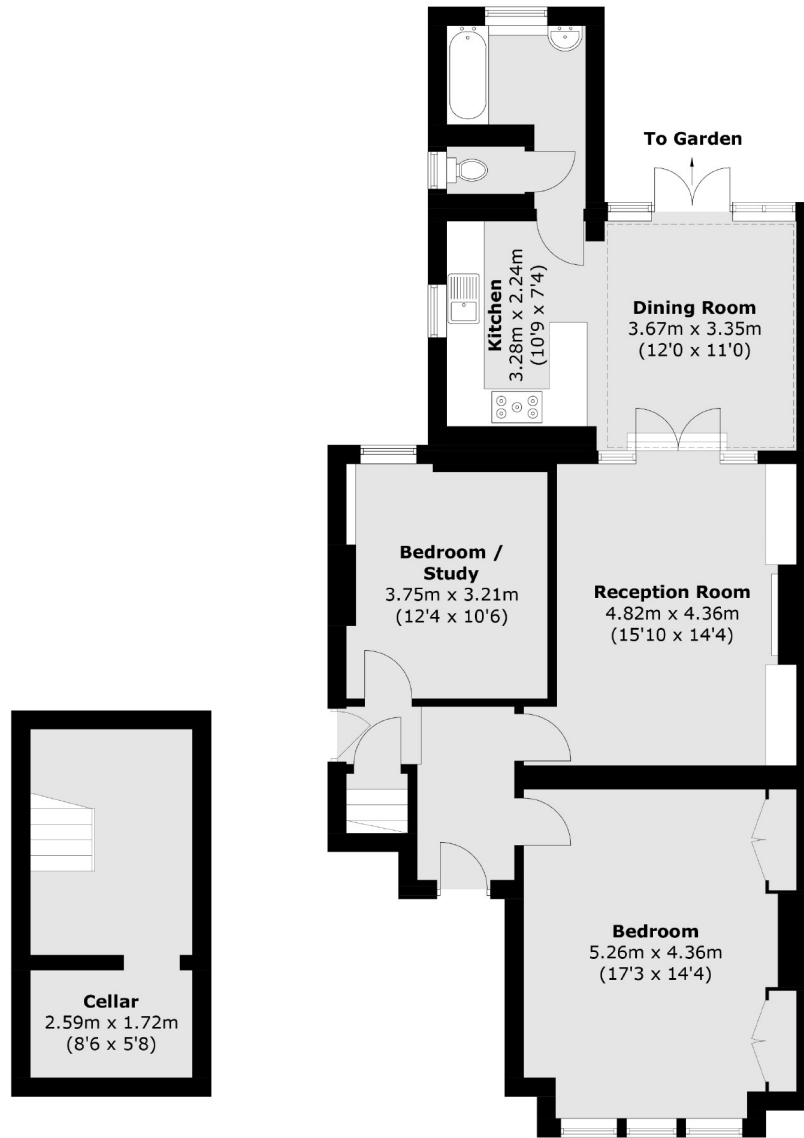


There is a large open plan kitchen / dining room with french doors leading out onto the large private garden. There is a bright and spacious reception room with a lovely fireplace. There are also two generous double bedrooms one currently being utilised as a home office. This property also benefits from a cellar. There is also planning permission approved for a rear extension.

Bushnell Road is ideally situated in the ever popular Heaver Estate which is within easy reach of both Balham and Tooting Bec stations. It lies just moments from the green spaces of Tooting Common and is only a short distance from the bars, restaurants and shops that Balham has to offer.







Lower Ground Floor

Ground Floor

Total area (approx.): 106.4 sq. m (1,145.3 sq. ft)

Jacksons Balham
 8-11 Balham Station Road
 London
 SW12 9SG
 020 8675 6555
balham.sales@jacksonsestateagents.com

Energy Rating: C We aim to make our particulars both accurate and reliable. However they are not guaranteed; nor do they form part of an offer or contract. If you require clarification on any points then please contact us, especially if you're traveling some distance to view. Please note that appliances and heating systems have not been tested and therefore no warranties can be given as to their good working order.