



CAMBRAY ROAD, SW12

£890,000

- Three Bedrooms
- Victorian Maisonette
- Modern Kitchen
- Large South Facing Garden
- Hyde Farm Estate
- Energy Rating C





ABOUT THE HOME

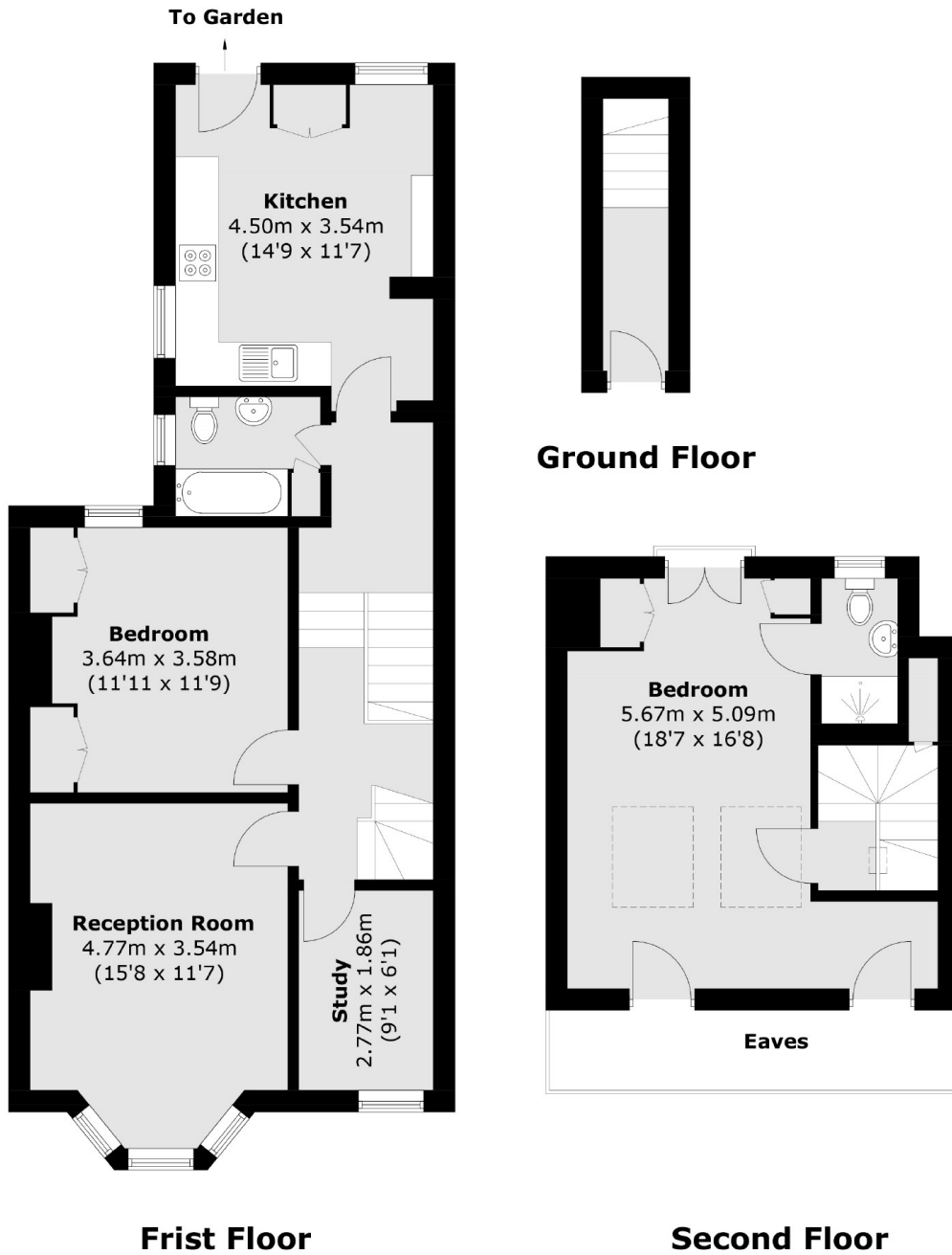
Accessed via its own front door and located in the popular Hyde Farm Estate in Balham is this lovely, three bedroom, Victorian Maisonette.

This lovely maisonette offers a bright and spacious reception room as well as separate modern fitted kitchen. The property benefits from two generous double bedrooms both with ample built in storage. The large master suite also offers an en-suite bathroom and juliet balcony.

Cambay Road is situated within the Hyde Farm area within close proximity to Balham and just moments from the green spaces of Tooting Bec Common. It is well located for easy access to Balham underground and mainline stations as well as all of the shops, bars, restaurants and supermarkets on offer locally.







Total area (approx.): 98.2 sq. m (1,057 sq. ft)
(Excluding Eaves)

JACKSONS BALHAM

8-11 Balham Station Road,
London, SW12 9SG
Sales: 020 8675 6555
Lettings: 020 8675 6565

Energy Rating: C We aim to make our particulars both accurate and reliable. However they are not guaranteed; nor do they form part of an offer or contract. If you require clarification on any points then please contact us, especially if you're traveling some distance to view. Please note that appliances and heating systems have not been tested and therefore no warranties can be given as to their good working order.