

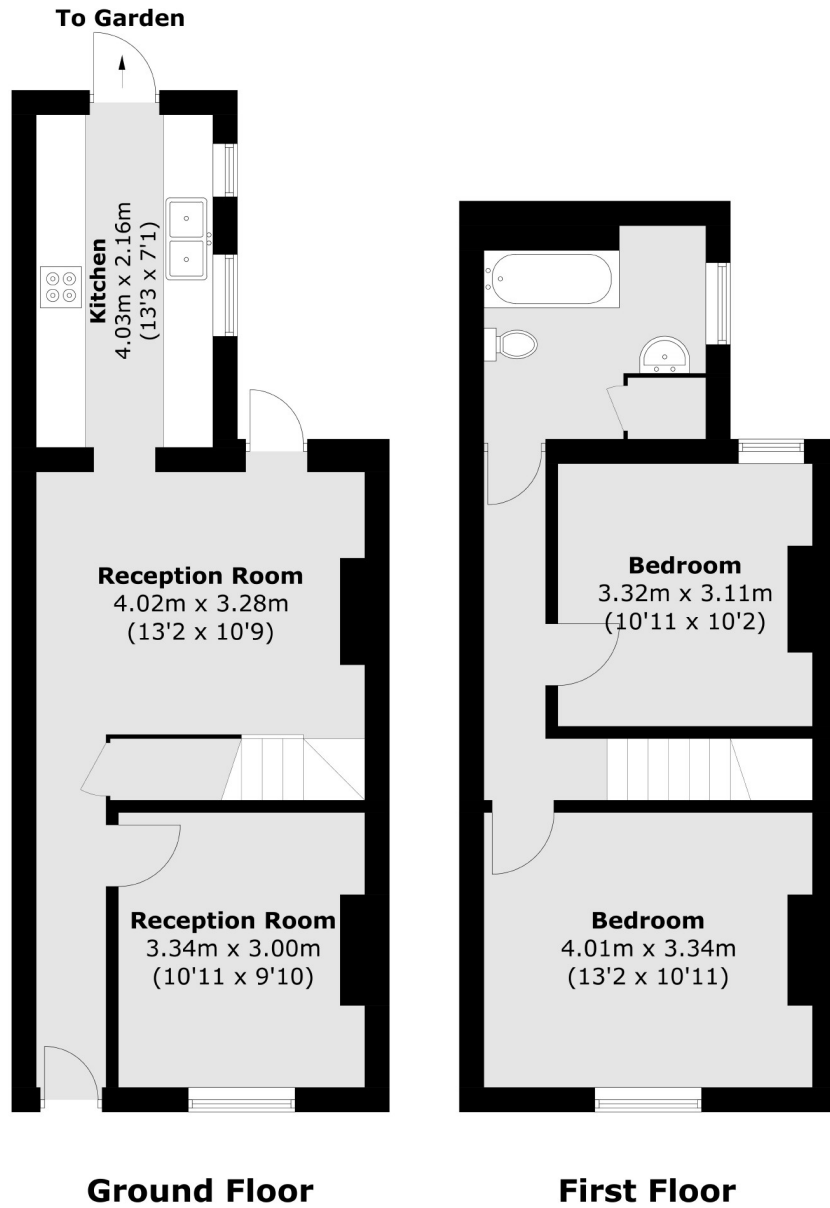


## Balham New Road, SW12

£875,000

Ideally located between Balham and Clapham South stations is this lovely two double bedroom, terraced house. This beautiful property offers two reception rooms as well as separate eat-in kitchen. This property benefits from a private, south facing garden. On the first floor there are two generous double bedrooms and a good sized family bathroom.

- Two Double Bedrooms
- Two Reception Rooms
- Close to Amenities
- Terraced House
- Private Garden
- Clapham South Location



Total area (approx.): 78.0 sq. m (839.5 sq. ft)

Jacksons Balham  
8-11 Balham Station Road  
London  
SW12 9SG  
020 8675 6555  
balham.sales@jacksonsestateagents.com

Energy Rating: D We aim to make our particulars both accurate and reliable. However they are not guaranteed; nor do they form part of an offer or contract. If you require clarification on any points then please contact us, especially if you're traveling some distance to view. Please note that appliances and heating systems have not been tested and therefore no warranties can be given as to their good working order.