



## Haverhill Road, SW12

£750,000

Located in the popular Hyde Farm Estate and just moments from Tooting Common is this beautifully presented three bedroom, Victorian Maisonette.

- Three Bedrooms
- Victorian Maisonette
- Private Garden
- Chain Free
- Modern Kitchen
- Hyde Farm Estate



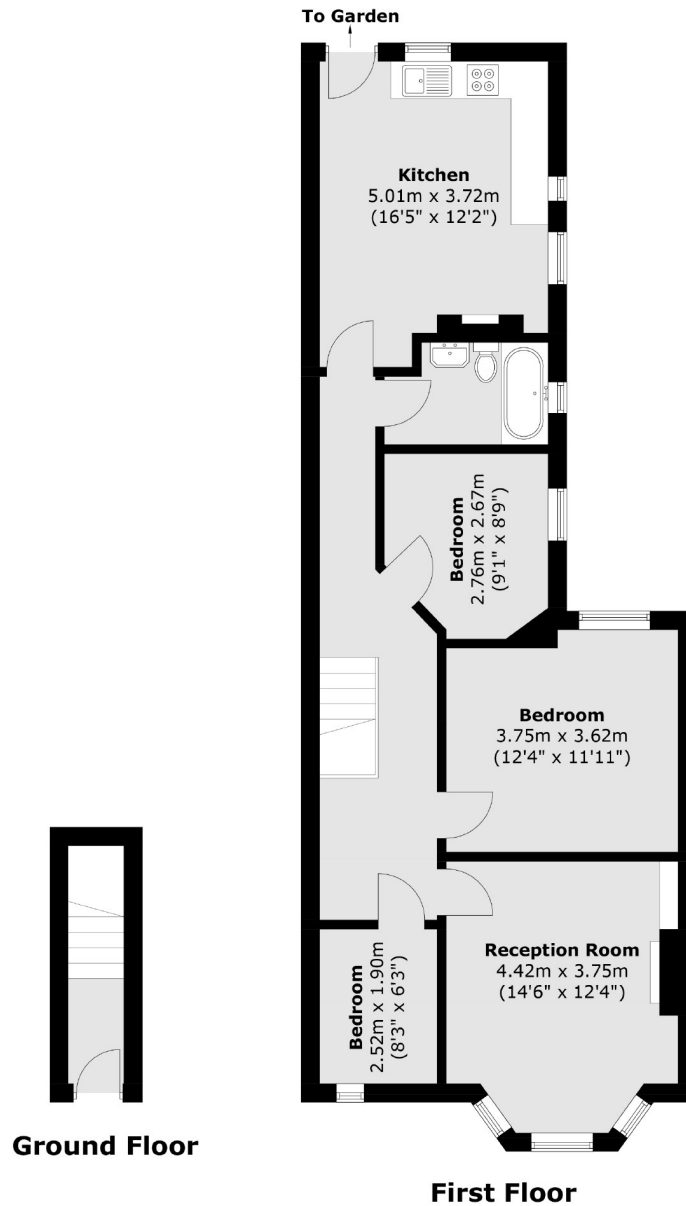
This property is offered to the market with no onward chain and benefits from a wonderful private garden. There is a modern fitted kitchen with space for dining, a bright and spacious separate reception room and three bedrooms.

Located in the Hyde Farm area, close to both Henry Cavendish and Telferscot Primary schools, this home is well situated for easy access into Balham where there are an array of shops, bars and restaurants, as well as excellent transport links including access to mainline and underground services. Tooting Bec Common is also just moments away at the end of the road.









Total area (approx.): 82.0 sq. m (882.6 sq. ft)

Jacksons Balham  
8-11 Balham Station Road  
London  
SW12 9SG  
020 8675 6555  
balham.sales@jacksonsestateagents.com

Energy Rating: D We aim to make our particulars both accurate and reliable. However they are not guaranteed; nor do they form part of an offer or contract. If you require clarification on any points then please contact us, especially if you're traveling some distance to view. Please note that appliances and heating systems have not been tested and therefore no warranties can be given as to their good working order.