



Salford Road, SW2

£1,250,000

A charming four bedroom family home with a beautifully landscaped garden located on Salford Road. The property has its own off street parking space and sits within close proximity to Telferscot Primary School.

- Four Bedrooms
- Modern Fitted Kitchen
- Telford Park Estate
- Off Street Parking
- Landscaped Garden
- Beautifully Finished

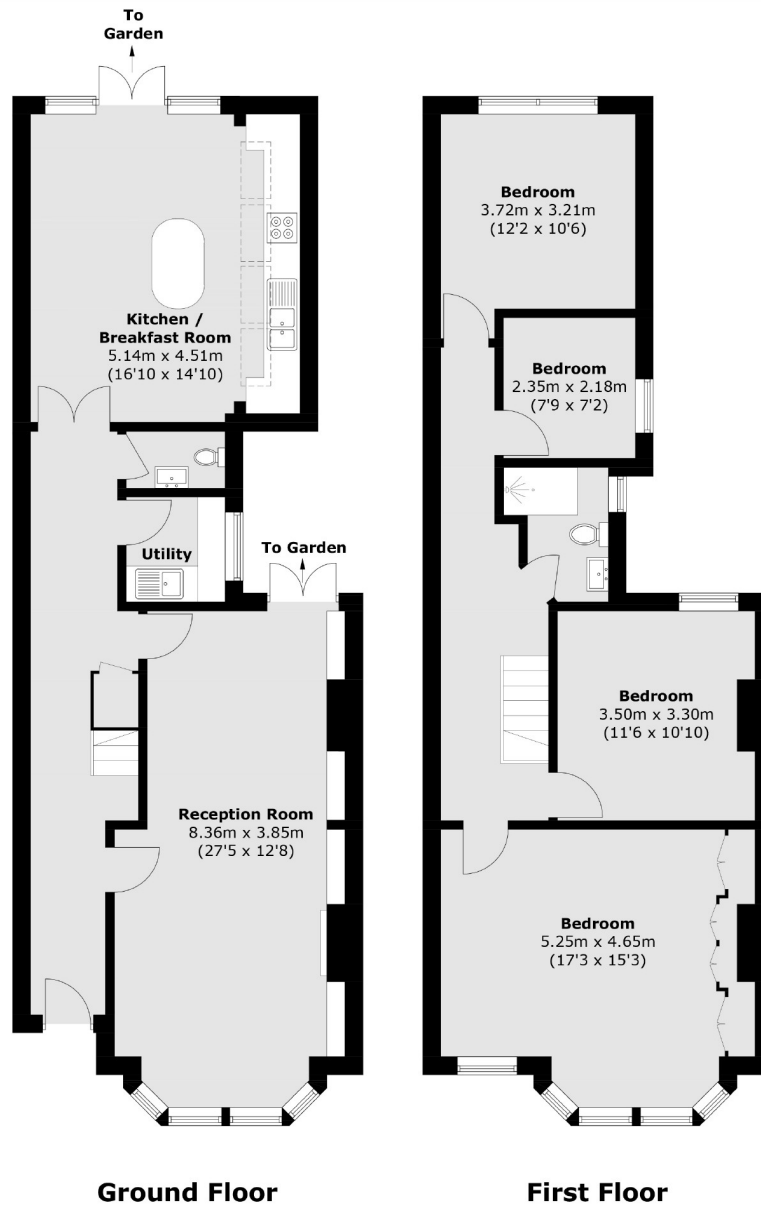


The downstairs features a spacious reception room with a feature fireplace. There is a modern kitchen/dining room to the rear of the property with french doors that lead out onto a beautiful garden. The first floor offers four bedrooms and a newly fitted family bathroom.

Salford Road is a popular residential road which runs off Emmanuel Road in Balham's Telford Park Estate. Balham mainline and underground station is within easy reach as are the vast array of shops, bars and restaurants local to the area. The green open spaces of Tooting Bec Common are also close by.







Total area (approx.): 141.1 sq. m (1,518.7 sq. ft)

Jacksons Balham
8-11 Balham Station Road
London
SW12 9SG
020 8675 6555
balham.sales@jacksonsestateagents.com

Energy Rating: C We aim to make our particulars both accurate and reliable. However they are not guaranteed; nor do they form part of an offer or contract. If you require clarification on any points then please contact us, especially if you're traveling some distance to view. Please note that appliances and heating systems have not been tested and therefore no warranties can be given as to their good working order.