

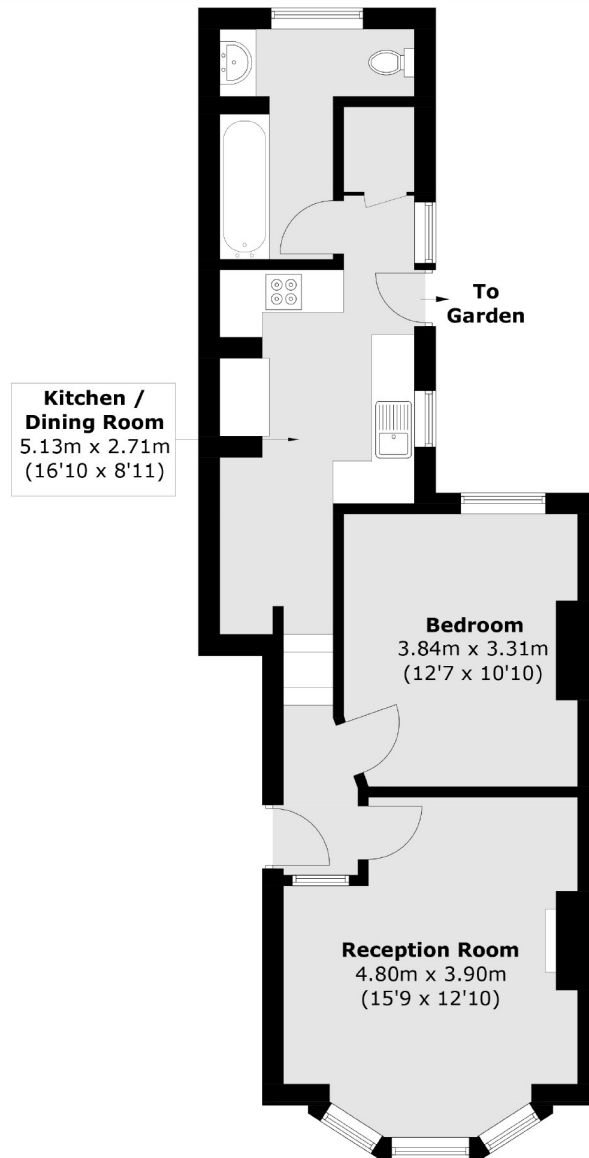


Byrne Road, SW12

£475,000

A one double bedroom Victorian flat in lovely condition in central Balham. This well proportioned property has a reception room to the front, with a feature bay window and log burner, a good sized double bedroom, a modern kitchen and a bathroom to the rear. The property benefits from a private decked courtyard garden which further leads to a large shared garden. There is also side access and no onward chain. NB. Photos taken pre-tenancy.

- One Double Bedroom
- Well Presented
- Private Outside Space
- No Onward Chain
- Victorian Conversion
- Convenient Location



Total area (approx.): 55.8 sq. m (600.6 sq. ft)

Jacksons Balham
8-11 Balham Station Road
London
SW12 9SG
020 8675 6555
balham.sales@jacksonsestateagents.com

Energy Rating: D We aim to make our particulars both accurate and reliable. However they are not guaranteed; nor do they form part of an offer or contract. If you require clarification on any points then please contact us, especially if you're traveling some distance to view. Please note that appliances and heating systems have not been tested and therefore no warranties can be given as to their good working order.