



Fieldhouse Road, SW12

£525,000

Located just moments from Tooting Bec common and in the popular Hyde Farm area of Balham, is this large first floor maisonette with its own front door retaining wonderful period features throughout.

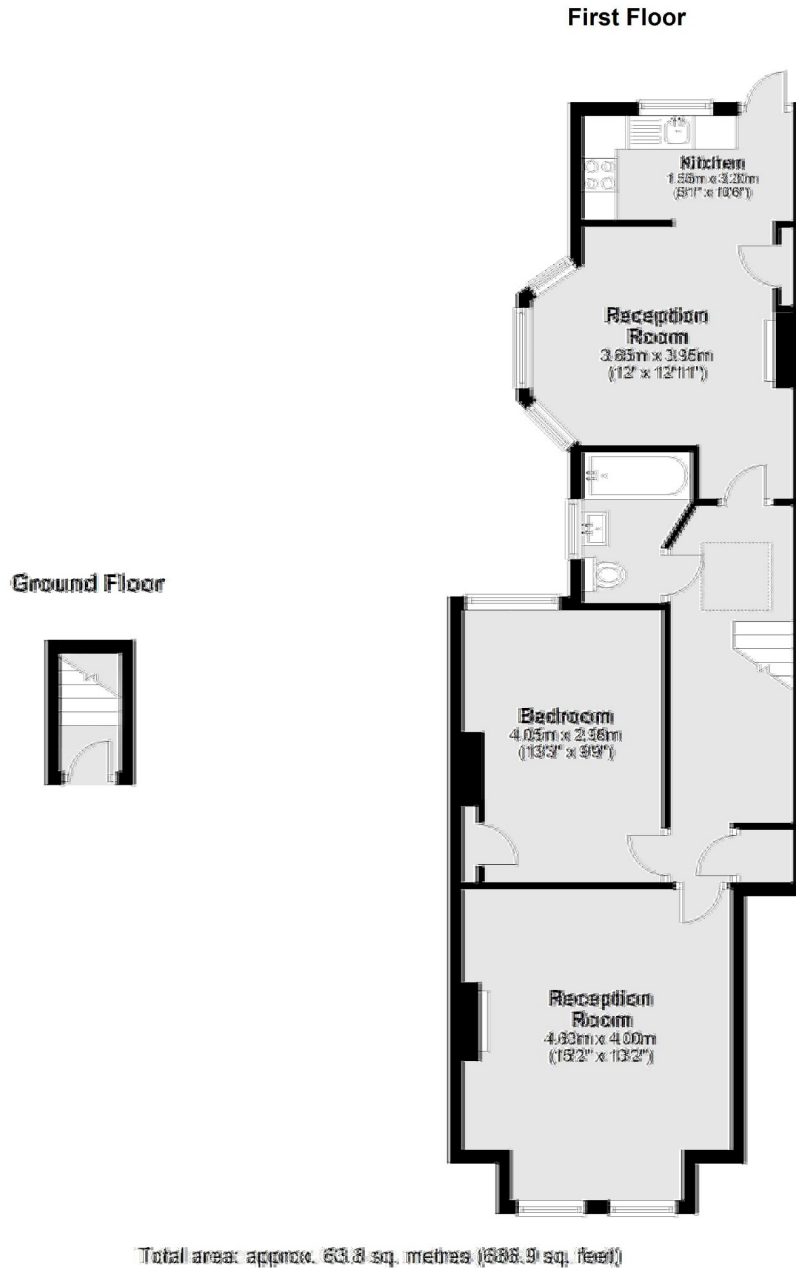
- One Double Bedroom
- Large Reception Room
- First Floor
- Victorian Maisonette
- Close to Common
- Hyde Farm Estate



Benefitting from lots of natural light this property offers a large reception room as well as a separate dining room and kitchen and has the benefit of the loft being demised. There is a large double bedroom as well as a good sized bathroom.

Located on Fieldhouse Road in the Hyde Farm area it is well situated for easy access to Balham. The north side of Tooting Bec Common lies just moments away at the end of the road and the shops, bars, restaurants and supermarkets local to the area are within easy reach.





Jacksons Balham
8-11 Balham Station Road
London
SW12 9SG
020 8675 6555
balham.sales@jacksonsestateagents.com

Energy Rating: D We aim to make our particulars both accurate and reliable. However they are not guaranteed; nor do they form part of an offer or contract. If you require clarification on any points then please contact us, especially if you're traveling some distance to view. Please note that appliances and heating systems have not been tested and therefore no warranties can be given as to their good working order.