

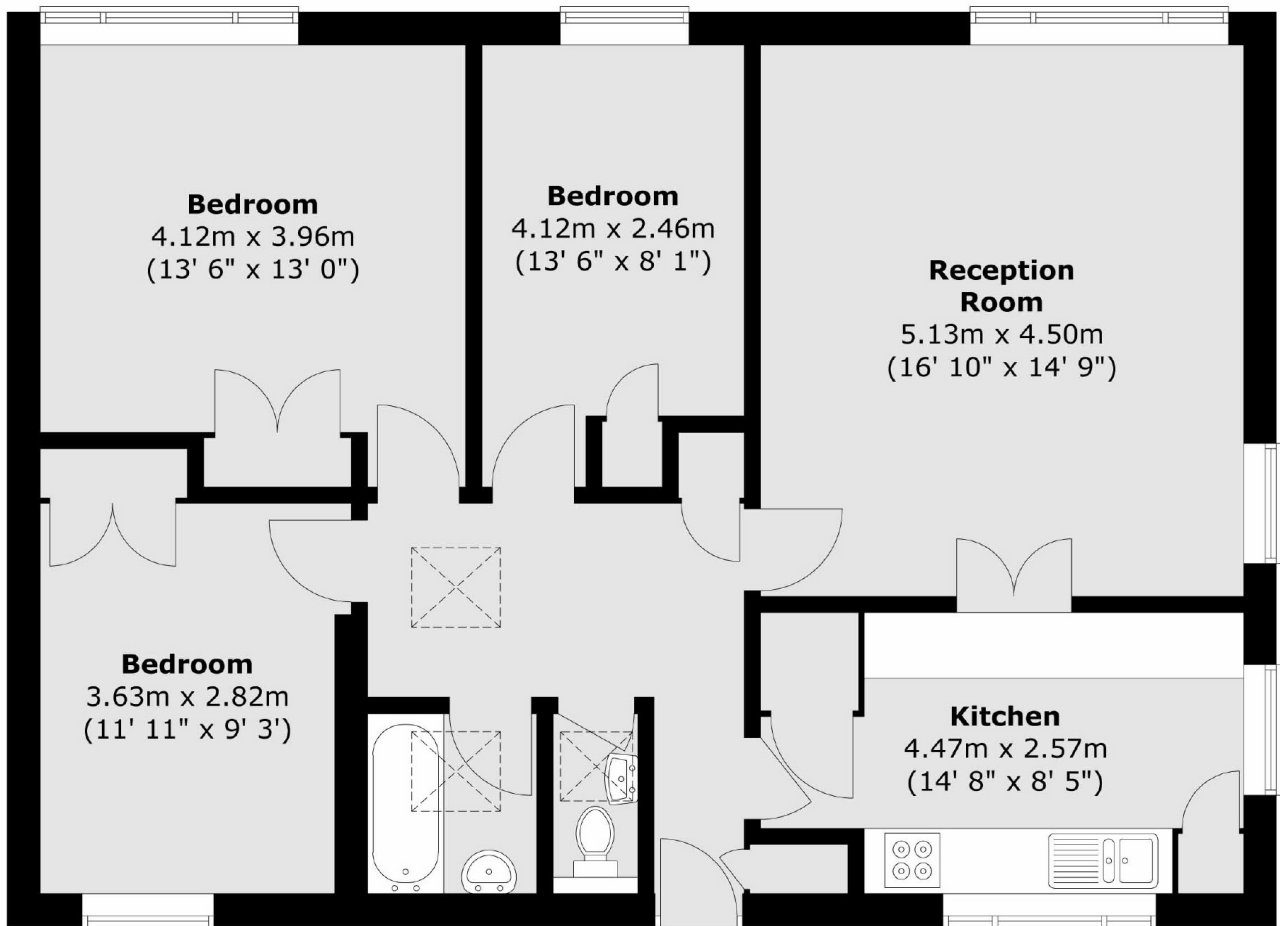


Hollies Way, SW12

£775,000

A very rarely available three double bedroom bungalow located in a purpose built development on Temperley Road. The property benefits from three double bedrooms, a separate kitchen, a large reception room and a bathroom with a separate WC. This property offers ample built in storage throughout as well as a private garden and is ideally located within half a mile of both Balham and Clapham South stations.

- Three Double Bedrooms
- Separate Kitchen/Reception
- Private Garden
- Bungalow
- Extension Potential - SSTP
- Nightingale Triangle

Ground Floor

Total area (approx.) : 88.8 sq. m (956 sq. ft)

Jacksons Balham
8-11 Balham Station Road
London
SW12 9SG
020 8675 6555
balham.sales@jacksonsestateagents.com

Energy Rating: D We aim to make our particulars both accurate and reliable. However they are not guaranteed; nor do they form part of an offer or contract. If you require clarification on any points then please contact us, especially if you're traveling some distance to view. Please note that appliances and heating systems have not been tested and therefore no warranties can be given as to their good working order.