



TELFORD AVENUE, SW2

£700,000

- Three Bedrooms
- South Facing Garden
- Telford Park Estate
- Ground Floor
- Victorian Maisonette
- Share Of Freehold





ABOUT THE HOME

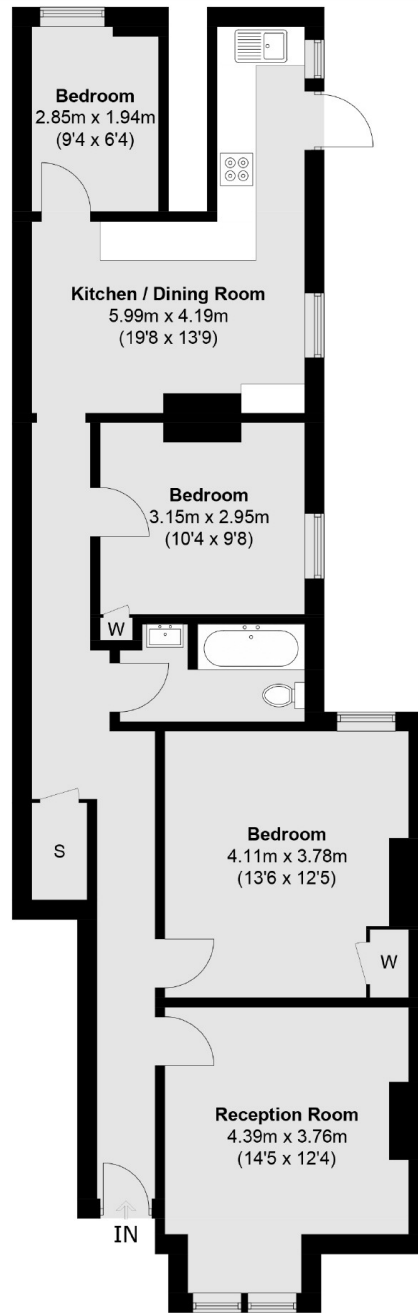
A beautiful three bedroom ground floor maisonette located in the Telford Park Estate. The property features a large reception room and spacious kitchen/breakfast room.

This property retains some lovely period features and benefits from a private, south facing garden. This property also benefits from having a share of the freehold.

Located on the highly regarded Telford Avenue, this property is well positioned for easy access into Balham and thus close to all of the shops, bars and restaurants local to the area. Balham mainline and underground stations are within close proximity as is Streatham Hill mainline station. There are excellent bus routes providing access to Brixton for the Victoria line. The green open spaces of Tooting Bec Common are also just meters from the front door and at the bottom of the road.







Ground Floor

Total area (approx.): 83.9 sq. m (903.1 sq. ft)

JACKSONS BALHAM

8-11 Balham Station Road,
London, SW12 9SG
Sales: 020 8675 6555
Lettings: 020 8675 6565

Energy Rating: C We aim to make our particulars both accurate and reliable. However they are not guaranteed; nor do they form part of an offer or contract. If you require clarification on any points then please contact us, especially if you're traveling some distance to view. Please note that appliances and heating systems have not been tested and therefore no warranties can be given as to their good working order.