



TELFORD AVENUE, SW2

£725,000

- Large Kitchen/Dining Room
- Private South Facing Garden
- First Floor Maisonette
- Close to Tooting Common
- Telford Park Estate
- Energy Rating C





ABOUT THE HOME

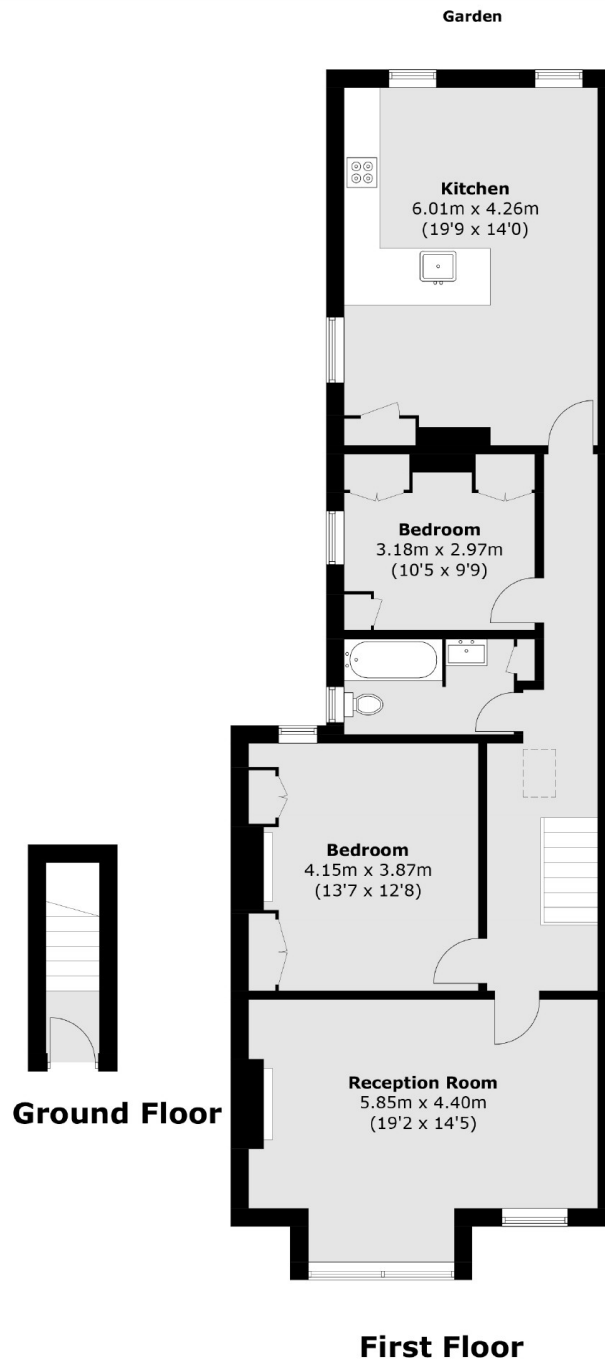
Located in the desirable Telford Park Estate is this beautifully presented two double bedroom, first floor period maisonette with it's own private south facing garden.

This property has been finished to a beautiful standard and offers a spacious and bright reception room to the front as well as a large kitchen with space for dining. The property also benefits from a private garden and access to a loft space suitable for storage or conversion (subject to the usual planning permissions and consents), energy rating c.

Telford Avenue is well positioned for easy access into Balham and close to all of the shops, bars and restaurants local to the area. Balham mainline and underground stations are within close proximity as is Streatham Hill mainline station. There are excellent bus routes providing access to Brixton for the Victoria line. The green open spaces of Tooting Bec Common are also within easy reach.







Total area (approx.): 97.6 sq. m (1050.6 sq. ft)

JACKSONS BALHAM

8-11 Balham Station Road,
London, SW12 9SG
Sales: 020 8675 6555
Lettings: 020 8675 6565

Energy Rating: C We aim to make our particulars both accurate and reliable. However they are not guaranteed; nor do they form part of an offer or contract. If you require clarification on any points then please contact us, especially if you're traveling some distance to view. Please note that appliances and heating systems have not been tested and therefore no warranties can be given as to their good working order.