



## Oakmead Road, SW12

£745,000

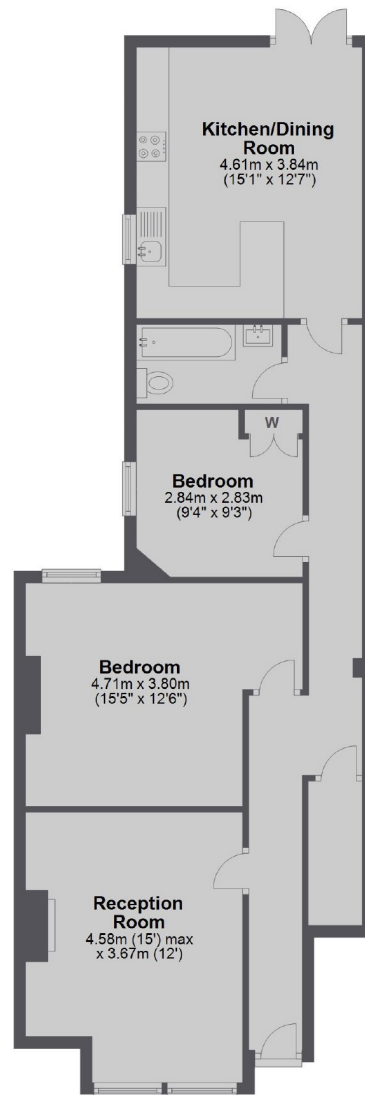
A two double bedroom ground floor Victorian maisonette which retains many original features and boasts a spacious kitchen/dining room and a private South facing garden.

Oakmead Road is a residential road just moments from Balham mainline and underground stations as well as all of the shops, bars and restaurants local to the area.

- Share of Freehold
- Victorian Maisonette
- Two Double Bedrooms
- Ground Floor
- South Facing Garden
- Beautifully Presented

For further information on the costs associated with renting a property, please pop into our office or visit our website.

## Ground Floor



Total area: approx. 79.4 sq. metres (854.8 sq. feet)

Jacksons Balham  
8-11 Balham Station Road  
London  
SW12 9SG  
020 8675 6565  
[balham.lettings@jacksonsestateagents.com](mailto:balham.lettings@jacksonsestateagents.com)

Energy Rating: D We aim to make our particulars both accurate and reliable. However they are not guaranteed; nor do they form part of an offer or contract. If you require clarification on any points then please contact us, especially if you're traveling some distance to view. Please note that appliances and heating systems have not been tested and therefore no warranties can be given as to their good working order.